

# Leasing Presentation



***Kalpana Square, Bhubaneswar***



NSIC - CRISIL  
SE 3A



MEMBER OF  
MIDDLE EAST  
COUNCIL OF  
SHOPPING CENTRES



Member of  
International Council  
of Shopping Centers

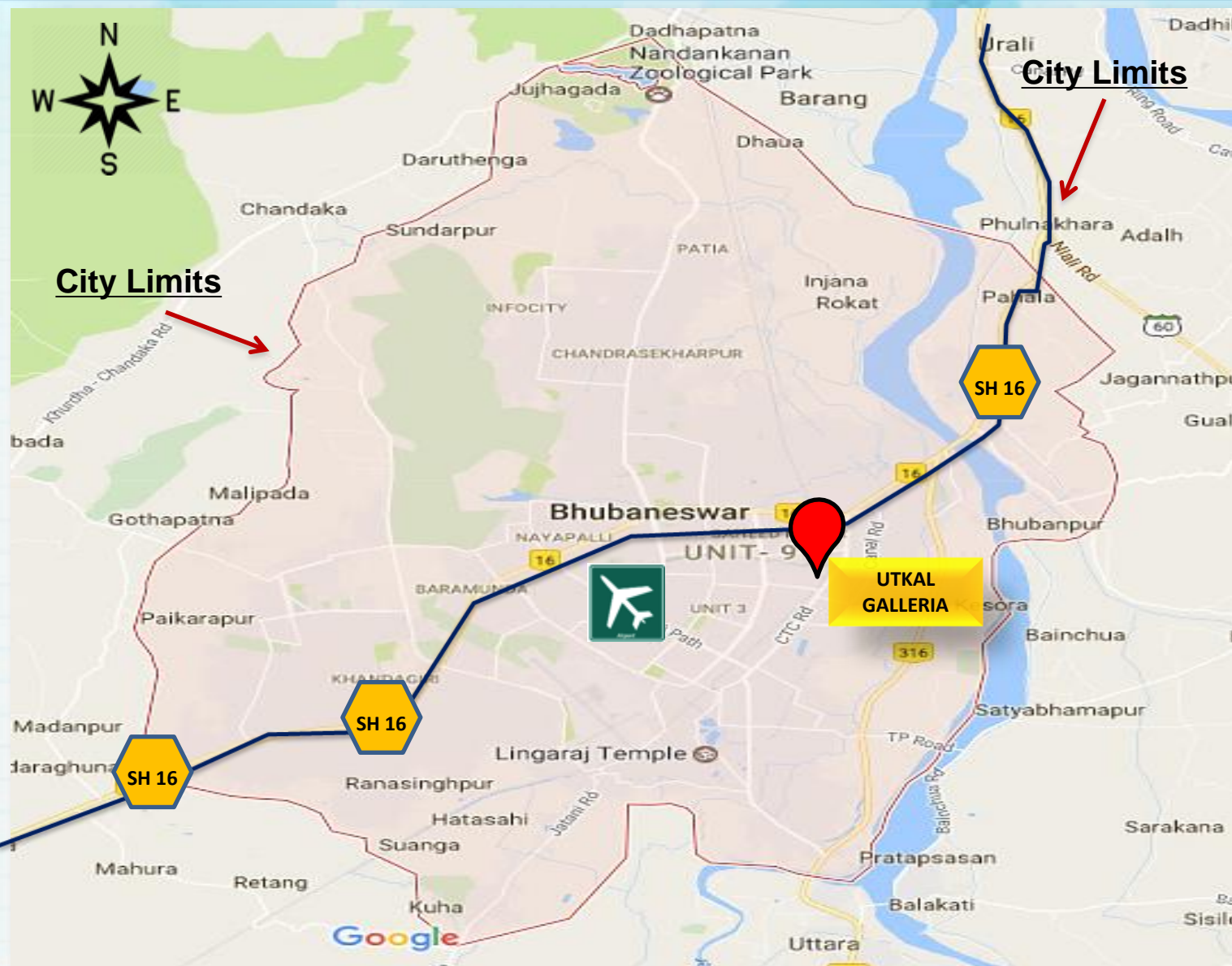
beyond  
**squarefeet**  
shopping mall specialist™

India | Iran | Nepal | Nigeria | Oman | Qatar



# CITY SCAPE

# City Map



**Capital City of  
Odisha**

**City of Temples**

**Population  
15,00,000+**

**Area 422 km<sup>2</sup>**

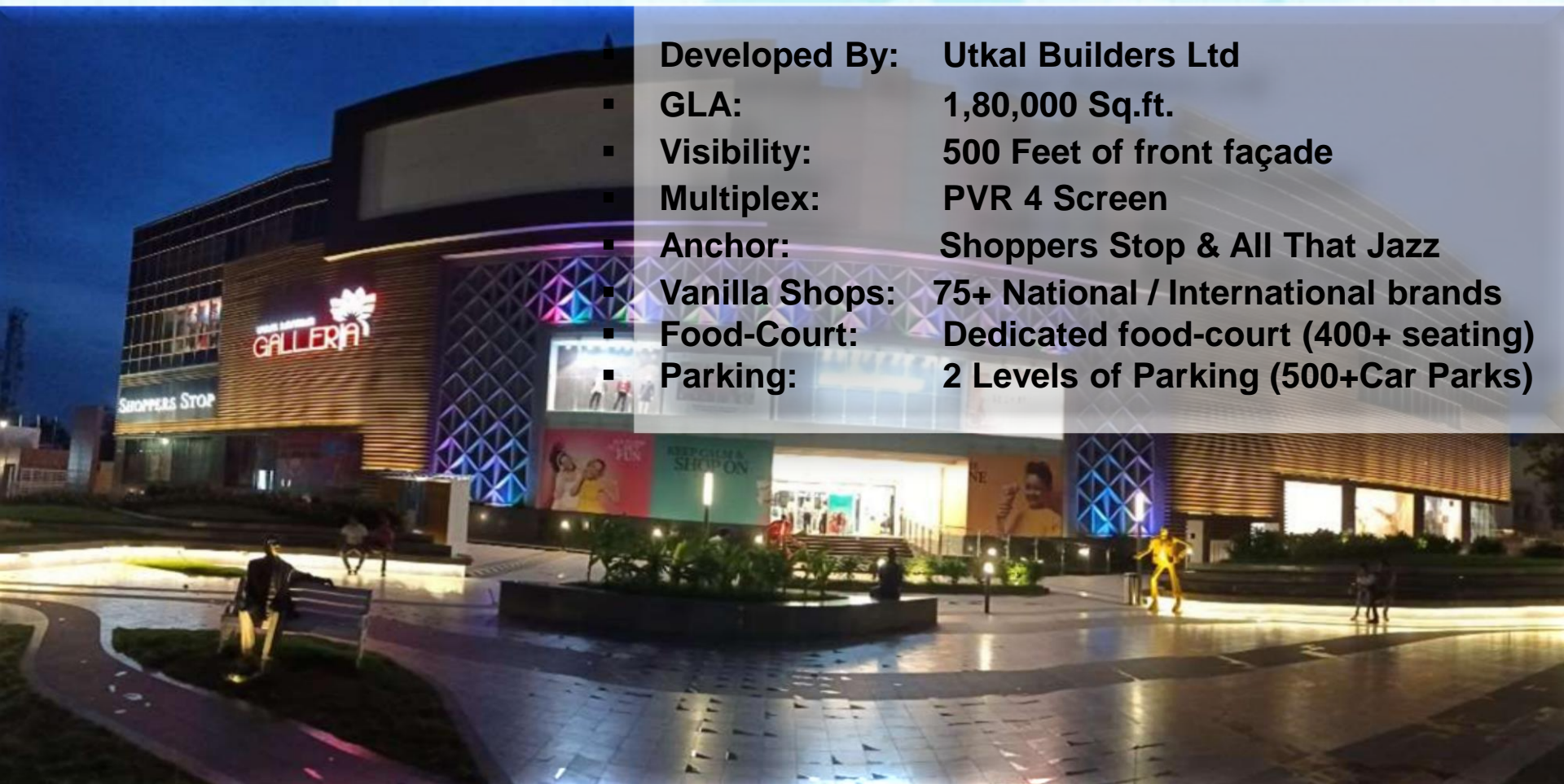
(Source : Census of India, 2011)

- Since, a lot of initiatives has been taken by the state and the central government **Bhubaneswar City** has witnessed a materialistic change and is titled as **No.1 in the Smart City** programme by Shri Narendra Modi.
- The components of Bhubaneswar city's economy varies from **horticulture, IT, tourism, agriculture, sericulture, minerals sector, agro-based and engineering industries.**
- Recently many big companies which include **Infosys, TCS, Mahindra Satyam, Genpact, Tata Power & Steel, Jindal Power & Steel, Aditya Birla Group, Reliance Energy, GMR, Vedanta, NTPC, NALCO, SAIL, Indian Oil Corporation Ltd., Bharat Petroleum Corporation Ltd, etc.** have invested in the city.
- Rapid industrialisation and increase in growth of services sector activities has resulted into **increasing disposable income, favourable demographics, changing lifestyles and growth of population.**
- Because of the increase in corporate offices and industries people from nearby cities and state are migrating to Bhubaneswar and as such huge demand for **Housing, Retail, Hospitality** has been witnessed.





# MALL INFORMATION



- Developed By: Utkal Builders Ltd
- GLA: 1,80,000 Sq.ft.
- Visibility: 500 Feet of front façade
- Multiplex: PVR 4 Screen
- Anchor: Shoppers Stop & All That Jazz
- Vanilla Shops: 75+ National / International brands
- Food-Court: Dedicated food-court (400+ seating)
- Parking: 2 Levels of Parking (500+ Car Parks)



MARKS & SPENCER  
LINGERIE & BEAUTY



LOUIS PHILIPPE



PARCOS  
SIMPLY INNOVATING



SUGAR



**crocs**  
COME AS YOU ARE™





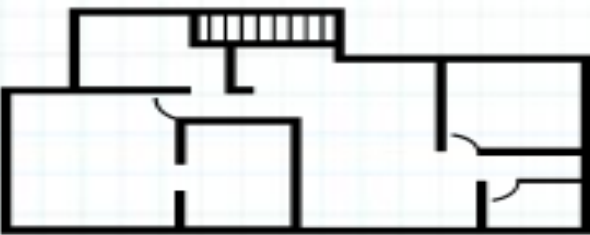


## Brands Under Fit-Out



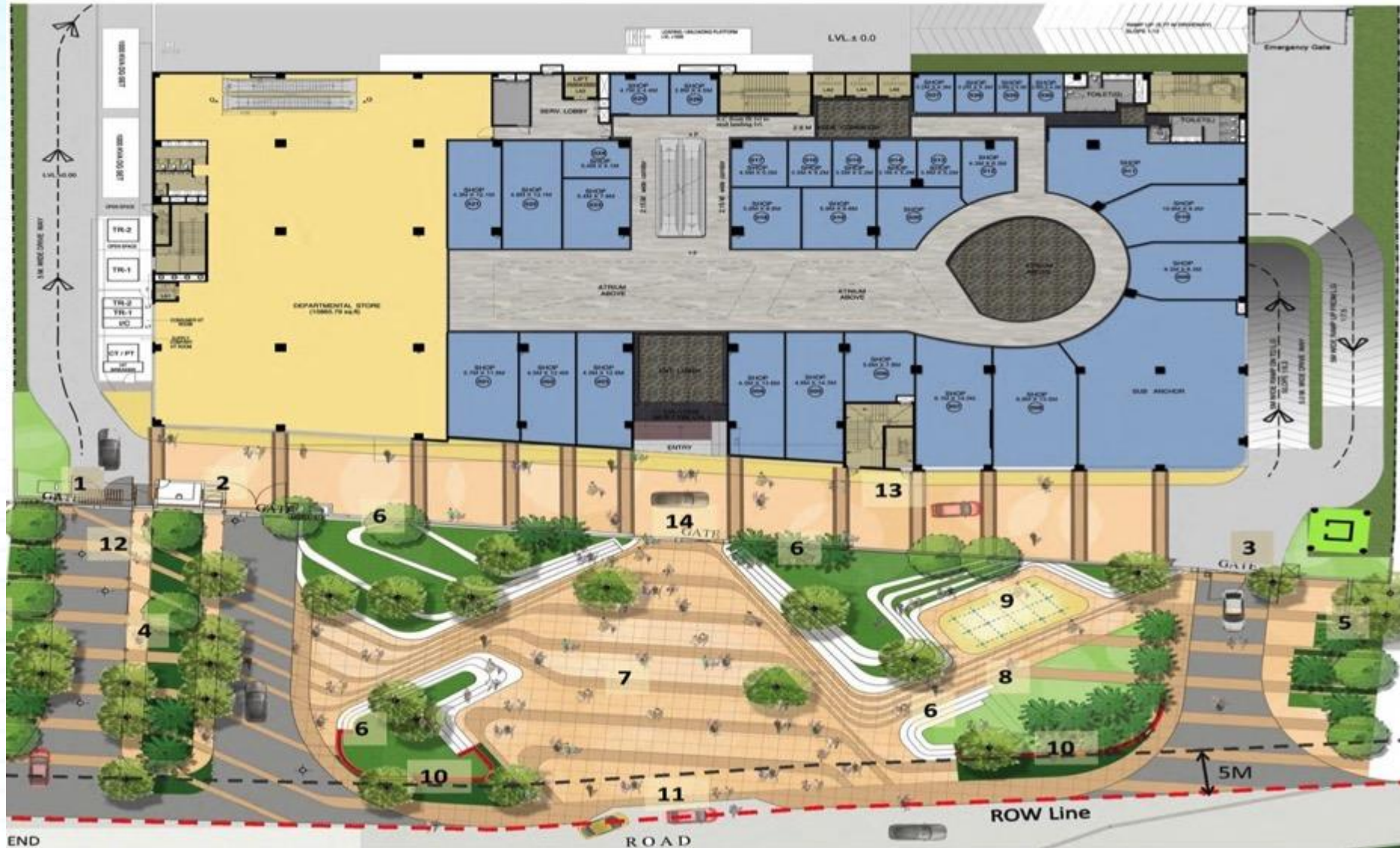






# FLOOR PLANS

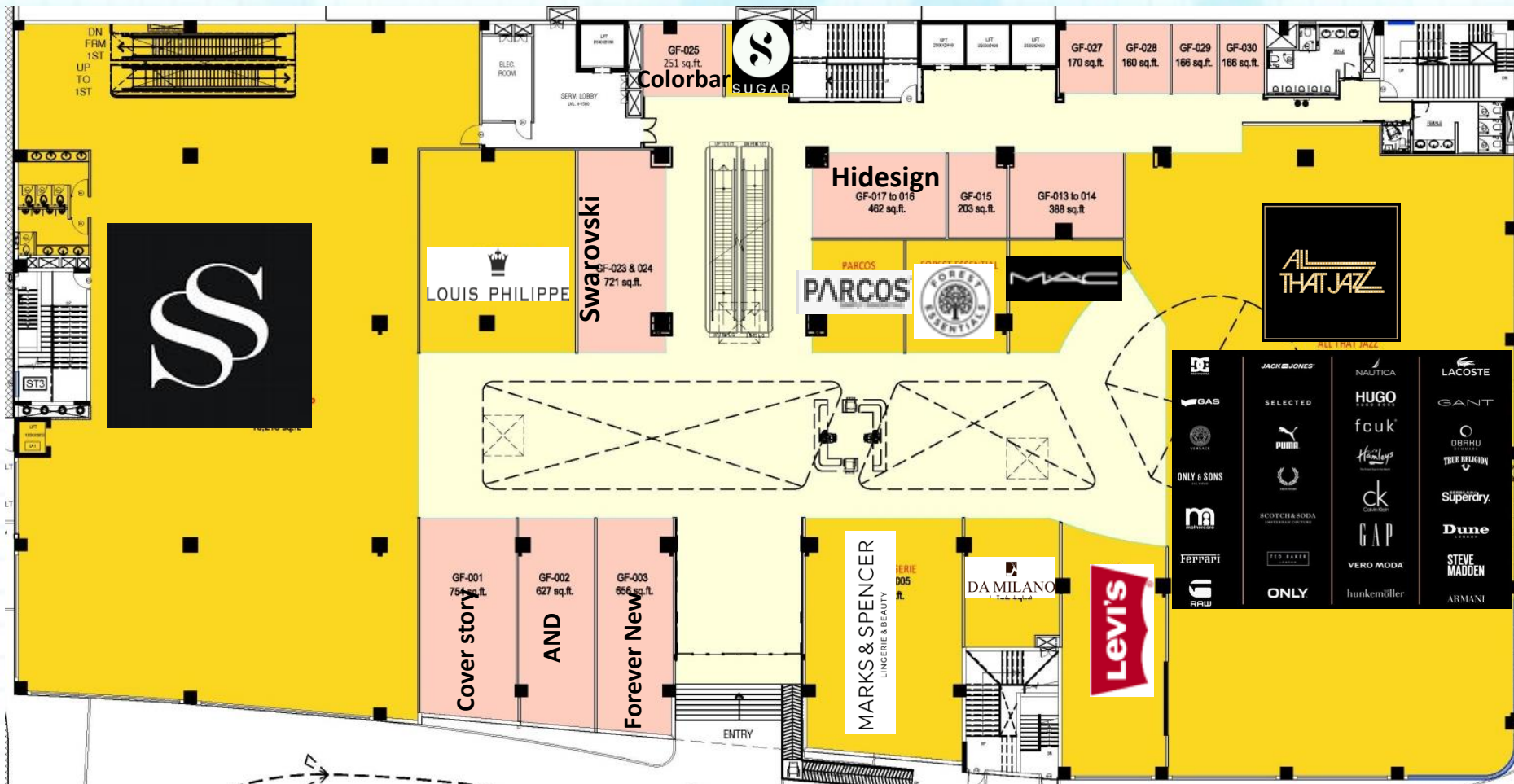
# Site Plan





# Ground Floor

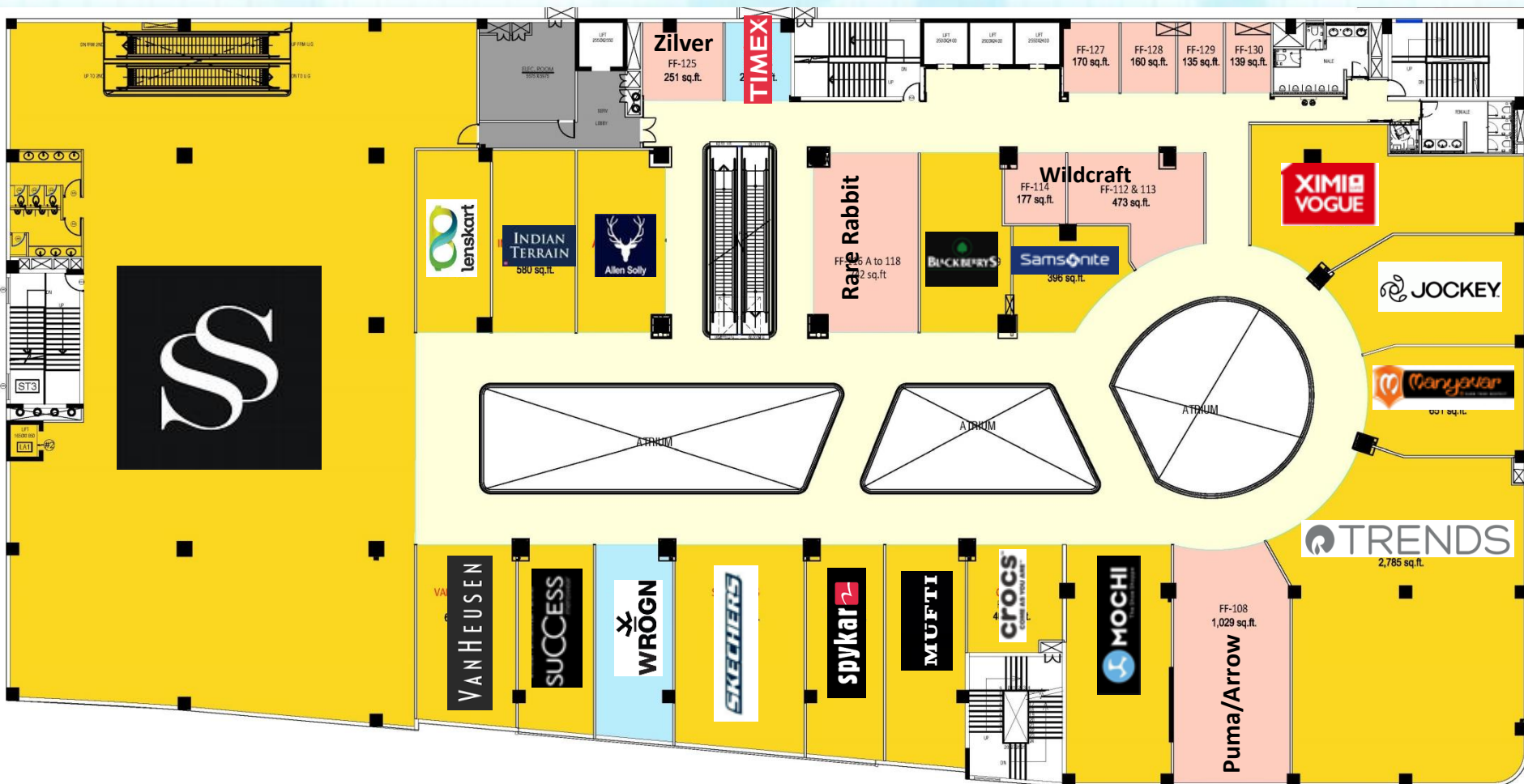
LEGEND :-	
Operational	Yellow
Leased Out / Under Fitout	Light Blue
Vacant	Light Orange





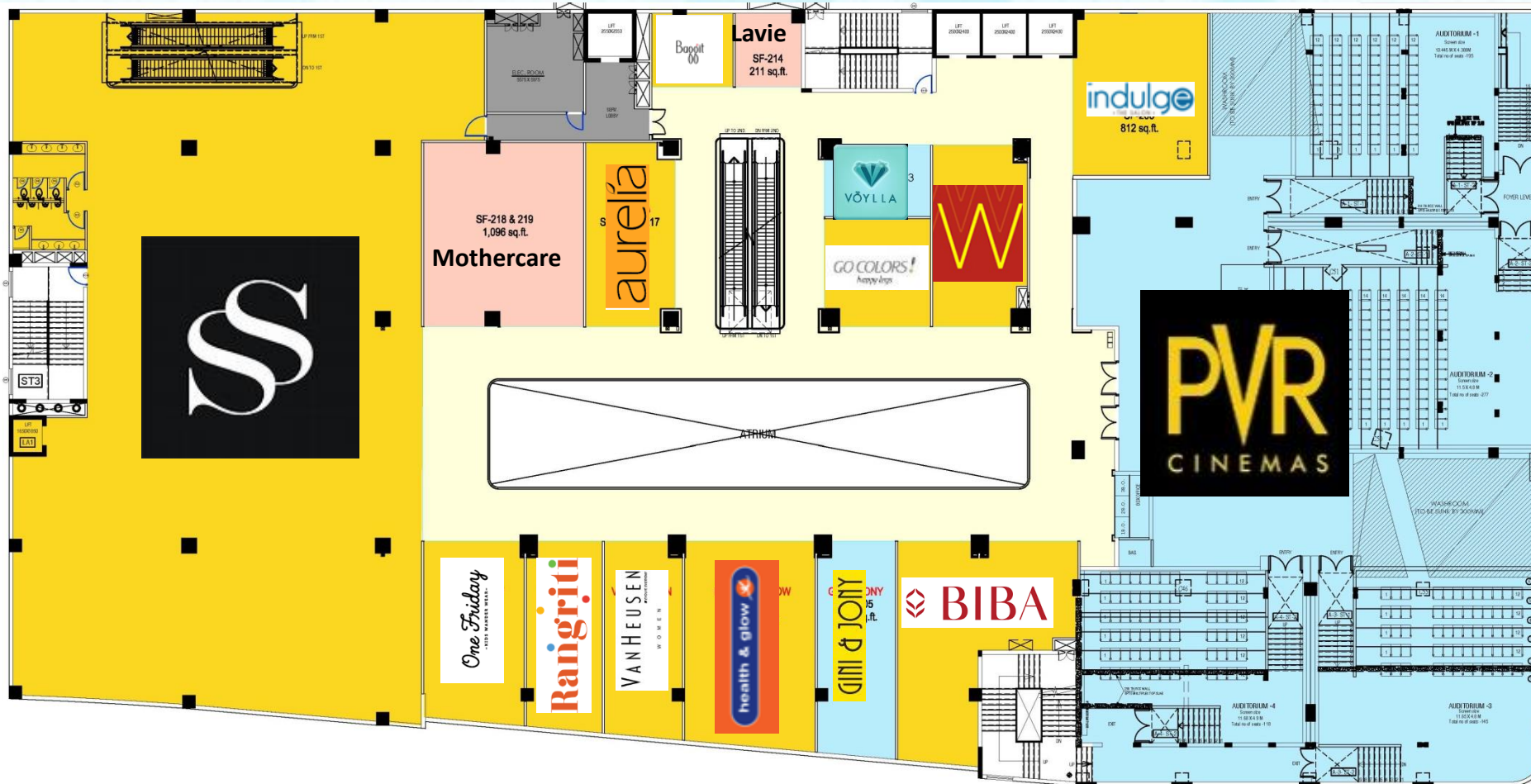
# First Floor

LEGEND :-	
Operational	Yellow
Leased Out / Under Fitout	Light Blue
Vacant	Light Orange



# Second Floor

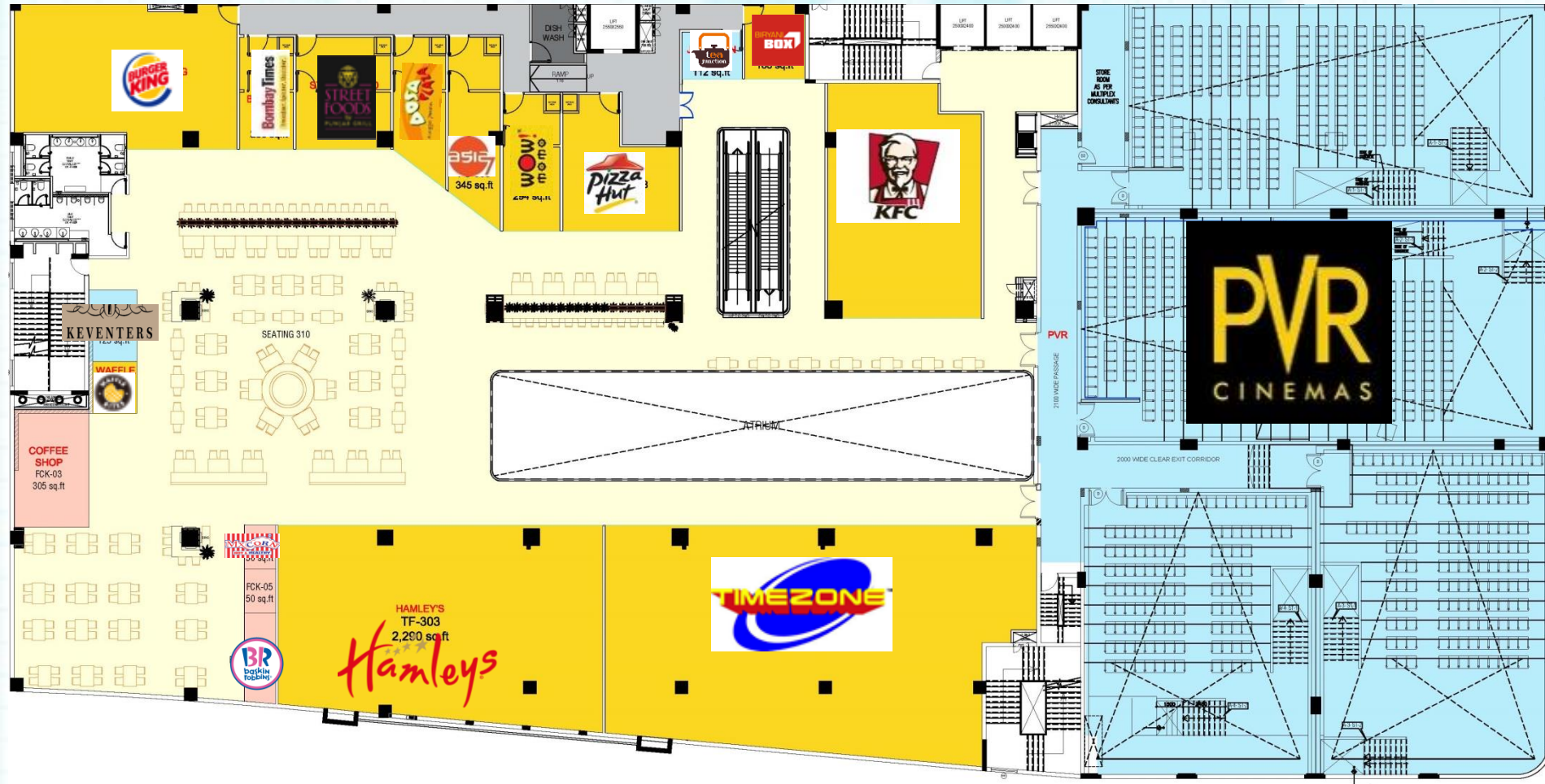
LEGEND :-	
Operational	Yellow
Leased Out / Under Fitout	Light Blue
Vacant	Light Orange





# Third Floor

LEGEND :-	
Operational	Yellow
Leased Out / Under Fitout	Light Blue
Vacant	Orange







# Landscape Plaza





# Mall Common Area





# Operational Anchor: Shoppers Stop





# Operational Anchor: All That Jazz





# Operational Brands





# Operational Brands





# Operational Brands





# Operational Brands





# Operational Brands





# Operational Brands





# Operational Brands





# Operational Brands





# Operational Brands





# Food Court Brands





# Food Court Brands





# Parking Area





# Concurrently Leasing

**Gokulam Galleria**  
Calicut



**Capital Mall**  
Bhopal



**Novelty Mall-**  
Pathankot



**Yen Square**  
Kuttiyadi





# Contact Details



**For further details please contact:**  
***Beyond Squarefeet Advisory Pvt. Ltd.***

**Leaseline : +91.98201.88182**  
**Board Line : +91.22.4219.0700**  
**[leasing@beyondsquarefeet.com](mailto:leasing@beyondsquarefeet.com)**

# THANK YOU!