

# LEASING DECK

[www.beyondsquarefeet.com](http://www.beyondsquarefeet.com)



P&M MALL

THE MALL FOR EVERYONE

MUZAFFARPUR

# About Muzaffarpur

## ‘The Land of Litchi’

- Muzaffarpur, existing since the 18<sup>th</sup> century is of Historical Significance in North-Eastern India.
- It is a key commercial and educational hub for North Bihar
- A melting pot of Hindu and Islamic culture and thoughts.
- Also know as “The Sweet City”, the largest producer of “Shahi Litchi”.





P&M MALL

THE MALL FOR EVERYONE

MUZAFFARPUR





P&M MALL  
THE MALL FOR EVERYONE

Façade

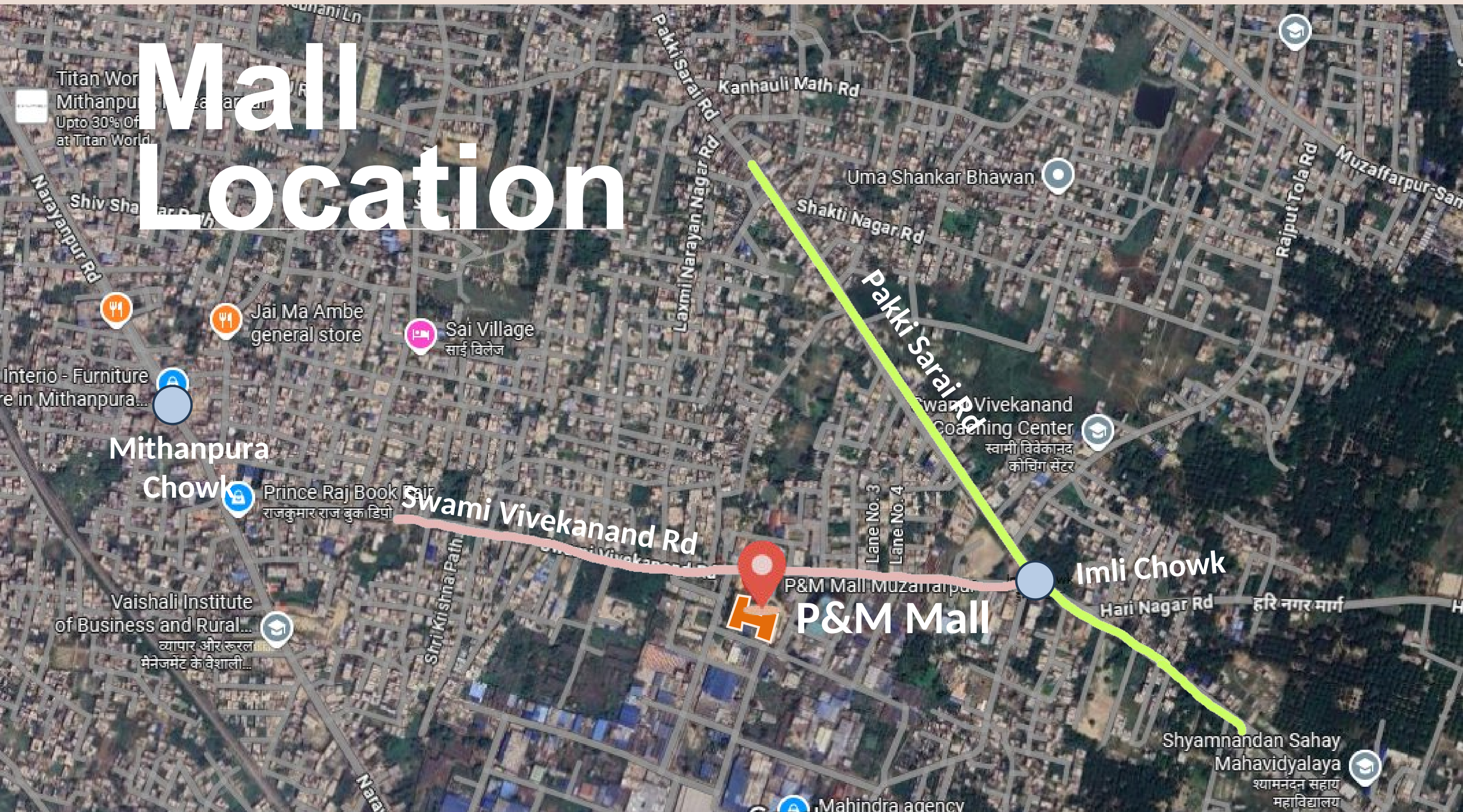
# Introduction

05

- Strategically positioned just 3 km from Motijheel, the city's commercial hub, and at the entry point to the Bela Industrial Area
- Best Mall of North Bihar with 1,75,000 Sq. Ft. Area
- Appx. 2,50,000 footfall Every Month
- Fully centrally air-conditioned for a luxurious shopping experience
- P&M Mall also blends tradition and modernity in a seamless way with its events and celebrations.



# Mall Location



Serukahi Sharif  
Muzaffarpur  
सेरुकाही शरीफ  
मुजफ्फरपुर

# Primary Catchment (7km Radius)

handa  
चंदा

07

Narauli  
नारौली

Blue Diamond  
Resort And Hot

ब्लू डायमंड  
रिसॉर्ट ऐंड होटल

AH42  
Damodarpur

Brahmpura

Damodarpur

Bhagwanpur

भगवानपुर  
Brahmapura

MUSAHRI

मुसहरी

Muzaffarpur

मुजफ्फरपुर

Mithanpura

Mansurpur  
Chamarua

मंसूरपुर  
चमरुआ

Marwan  
मारवान

Patahin  
पताही

GOBARSAHI  
गोबरसही

Prashant Hospital  
प्रशांत हॉस्पिटल



Khabra  
खबरा

Sherpur

Ranjay telecom

## P&M Mall Muzaffarpur

P&M Mall Muzaffarpur

Rohua

Prahladpur

Water Valley Water Park  
वॉटर वैली वॉटर पार्क

Bhatauna  
भातौना

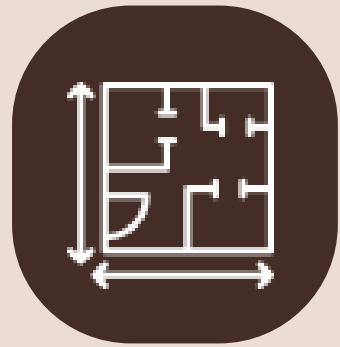
The Green Heritage  
Resort and Banquet  
द ग्रीन हेरिटेज  
रिसॉर्ट और बैंक्वेट

Narauli  
नारौली

NARAULI CHOWK  
नारौली चौक

# Mall Snapshot

08



**1,75,000 Sq. Ft.  
Area**



**Multiplex with 600+  
Seater (Operational)**



**3 Anchors &  
50 Vanilla Stores**



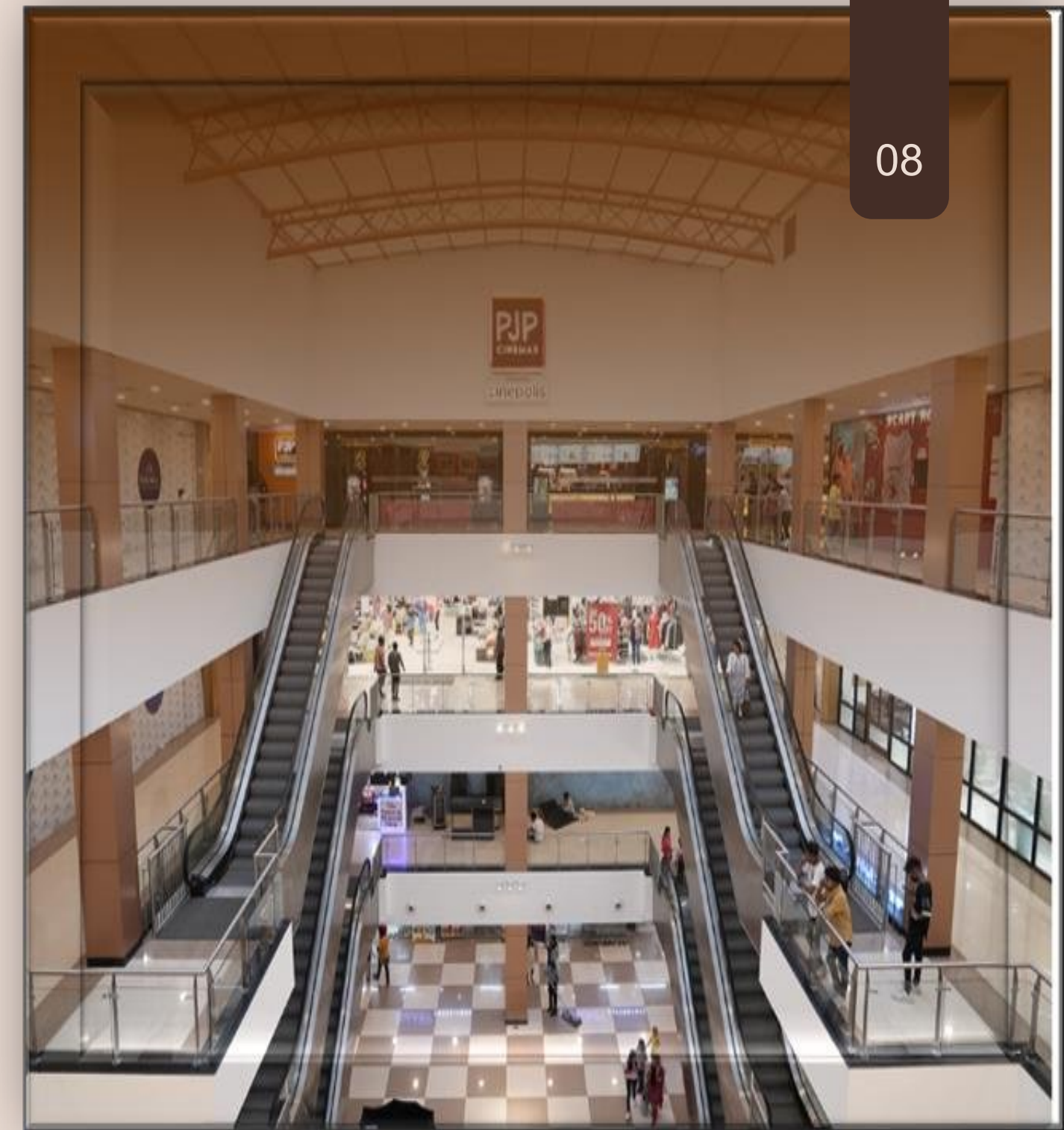
**14,000 Sq. Ft. with  
12 Food Counters**



**Parking space for  
1000+ Vehicles**



**Banquet Hall on  
Terrace of 18,000 sq.ft.  
(Under Construction)**



## Brand Logo = Operational

09



# First Floor

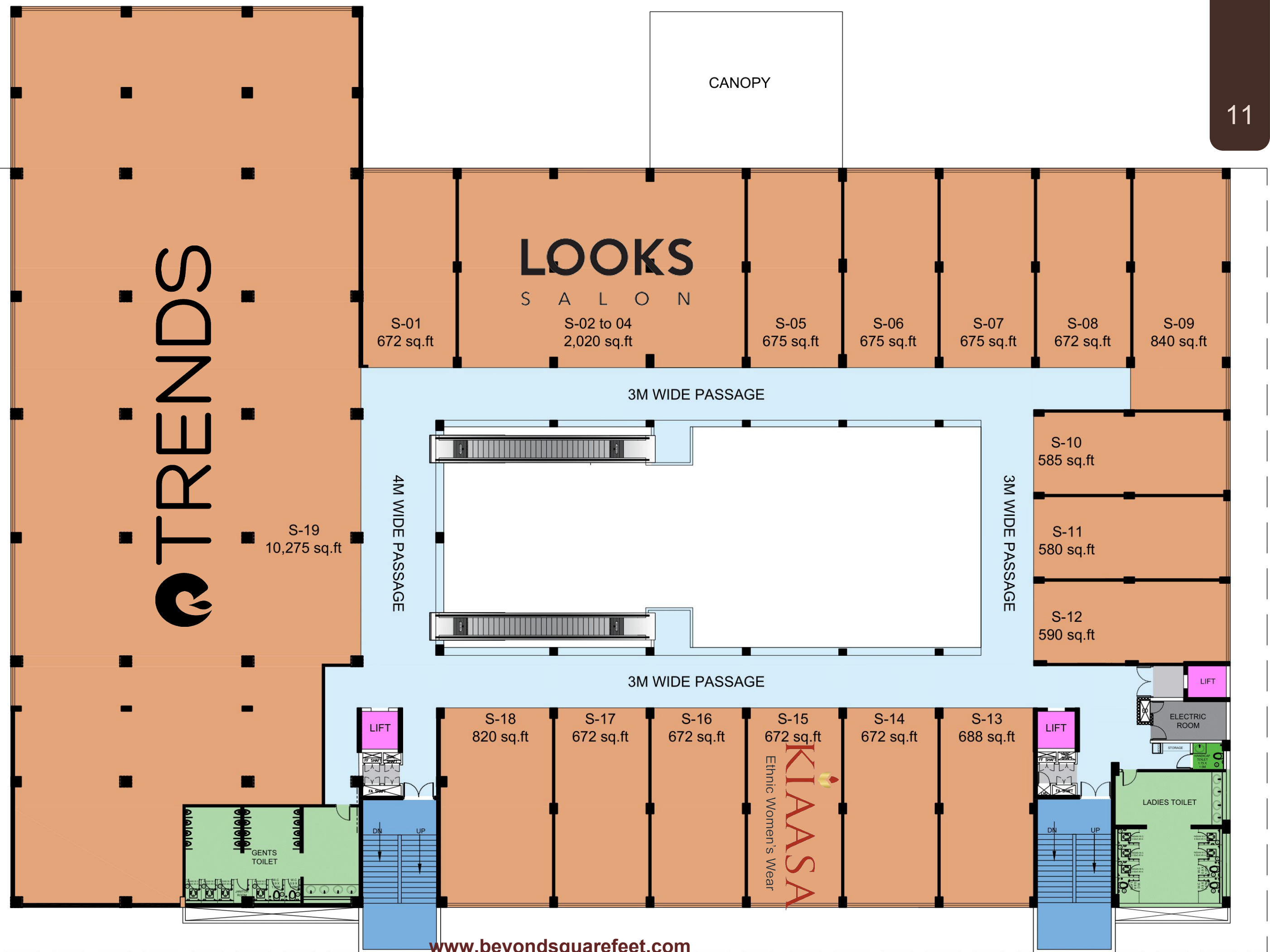
Brand Logo =  
Operational



10

# Second Floor

Brand Logo =  
Operational

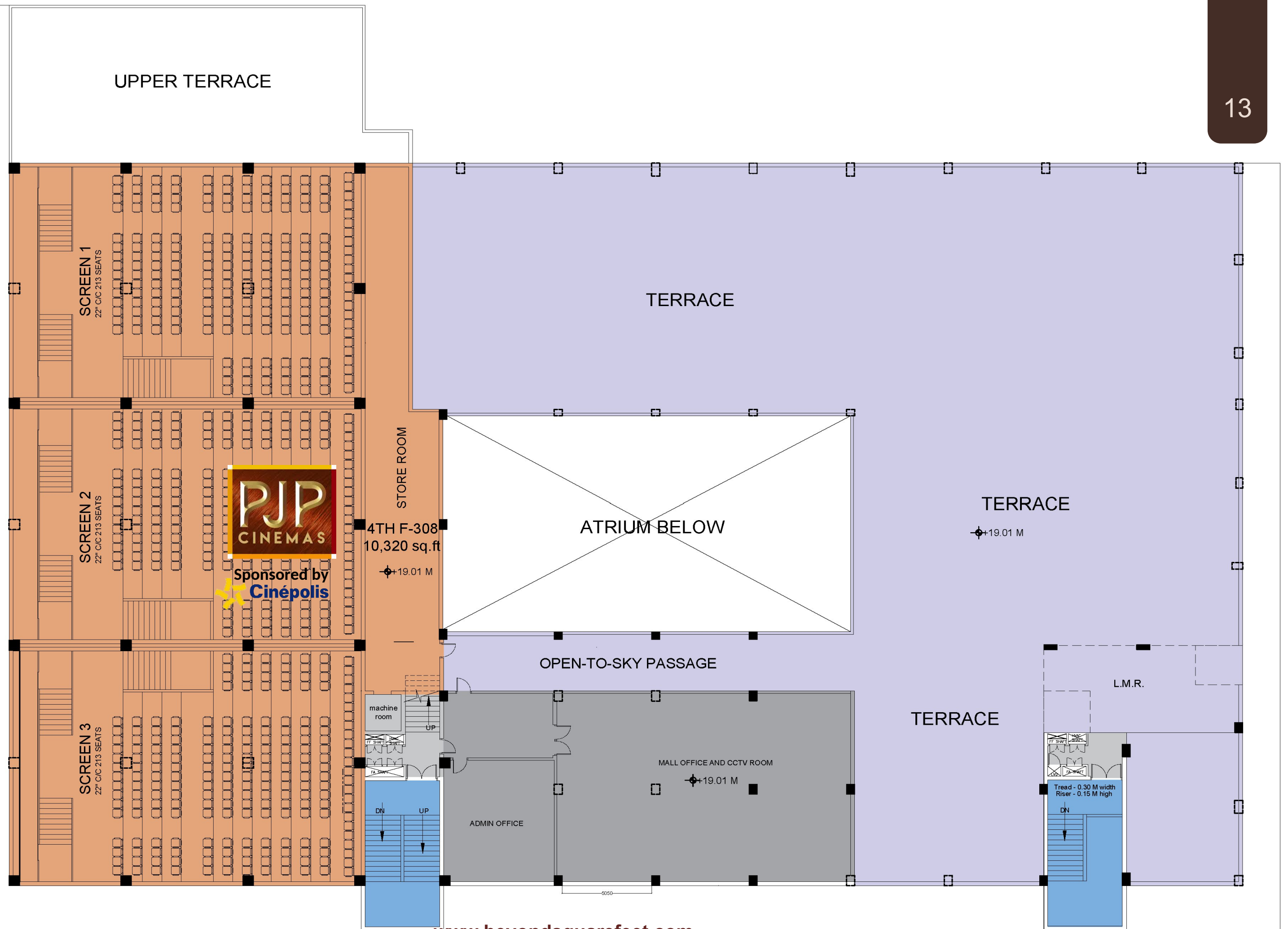


## Brand Logo = Operational



# Fourth Floor

Brand Logo =  
Operational



# Detail for Retail

14

- City TD for fashion retailers = 1,650 per Sq. Ft.
- Most prominent brands already have a presence
- Strategically placed in a high residential zone
- Beautifully landscaped
- Top notch mall experience
- Close to best high street
- Constant events and promotions planned

# Concurrently Leasing

15



Value Mall  
(Erode)



CDR Mall  
(Madurai)



Langval Mall  
(Thanjavur)



City Centre Mall  
(Asansol)



Crossroads Mall  
(Siliguri)



Grand Galleria  
(Purnia)

**EXCLUSIVELY  
MANAGED,  
MARKETED & LEASED BY**

Leaseline +91 90041.41256  
leasing@beyondsquarefeet.com

The logo for 'beyond squarefeet' is displayed on a dark brown background. The word 'beyond' is in a small, white, sans-serif font. 'squarefeet' is in a large, bold, white, sans-serif font, with the 's' and 'f' being particularly prominent. Below this, 'shopping mall specialist' is written in a smaller, white, sans-serif font. To the right of the text is a graphic consisting of a white crosshair and several overlapping squares in shades of gray and white. In the top right corner of the dark brown area is a small circular icon of the Indian flag with a registered trademark symbol.

beyond  
**squarefeet**  
shopping mall specialist®