

Leasing Deck



LANGVAL MALL

NAMMA OORU NAMMA MALL

Thanjavur, Tamil Nadu



NSIC - CRISIL
SE 3A



MEMBER OF
MIDDLE EAST
COUNCIL OF
SHOPPING CENTRES



Member of
International Council
of Shopping Centres

beyond
squarefeet
shopping mall specialist™

India | Iran | Nepal | Nigeria | Oman | Qatar



Presenting the First Mall of Thanjavur !

The Pride of Thanjavur,
In the heart of Thanjavur !



Mall Launched on 3rd August 2024



Brands Operational



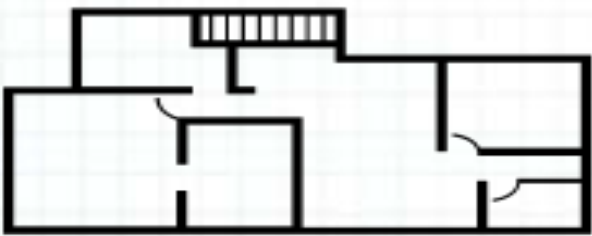
Latest Interior Pics



100%
LEASED
MODEL



- **GLA:** 2,50,000 Sq.ft. (appx.)
- **Multiplex:** 3 Screens
- **Anchors:** 4
- **Vanilla Shops:** 50+
- **Food-Court:** Dedicated food-court (300+ seating)
- **Parking:** 2 Levels of Parking (300+ Car Parks)
- **Location:** Heart of the City



FLOOR PLANS

Site Plan



Trichy Road / New Bus Stand Road

Lower Ground Floor

Brand Logos	Signed
Brand Names	Proposed



Ground Floor - Tenant Mix

Brand Logos	Signed
Brand Names	Proposed



Upper Ground Floor - Tenant Mix

Brand Logos	Signed
Brand Names	Proposed



First Floor - Tenant Mix

Brand Logos	Signed
Brand Names	Proposed



Second Floor - Tenant Mix

Brand Logos	Signed
Brand Names	Proposed



Third Floor - Tenant Mix

Brand Logos	Signed
Brand Names	Proposed



Fourth Floor - Tenant Mix



- The **only Mall** in appx. 60 kms radius
- Over 60% **Cash** Transactions
- **High Street** location in the heart of the City
- 71% of population is **married couples** with Kids
- Over 75% live in a **own house**.
- Very Strong & Healthy **Trading Density** Numbers.
- **Over 60** International, National & Regional brand already are present.
- **100%** Leased Model



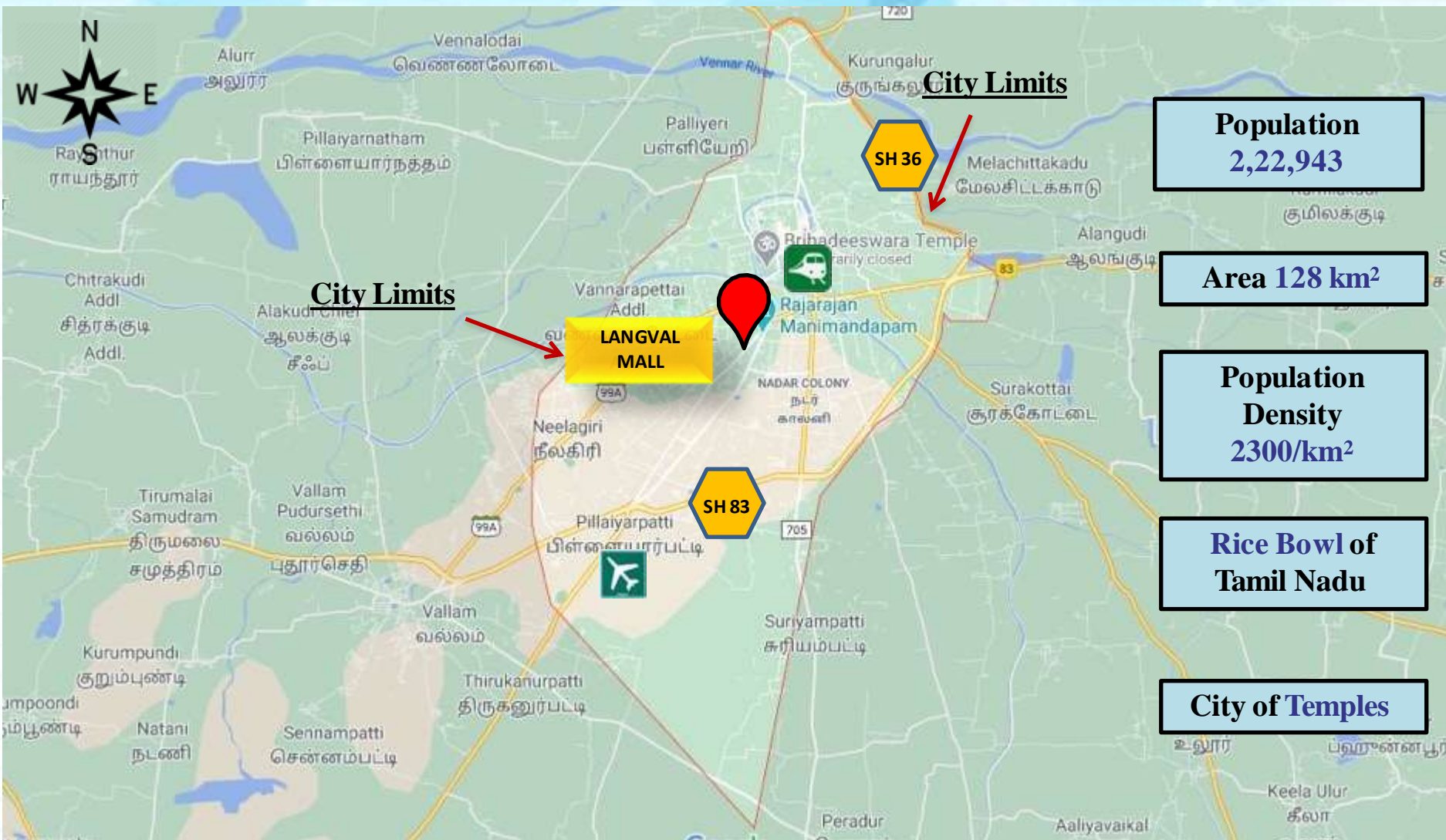
CITY SCAPE

Distance from Major Cities in TN



Sr.no	Town	Distance (Kms)	Distance In Time (Hrs)
1	Tiruchirappalli (Trichy)	49	1
2	Madurai	190	3
3	Puducherry	216	4
4	Salem	192	4
5	Coimbatore	269	6
6	Chennai	344	6

City Map



Particulars	Total	Male	Female	Facts & Figures	
District Population*	24,05,890	11,82,416	12,23,474	Population Density	2,300/km ²
City Population*	2,22,943	109,199	113,744	Per Capita Income (2014-15)	Rs. 40,366
Literacy Rate	91.27 %	94.80 %	87.92 %	Area	128 km ²
Sex Ratio		1000	1042	Average Household Size*	4.4

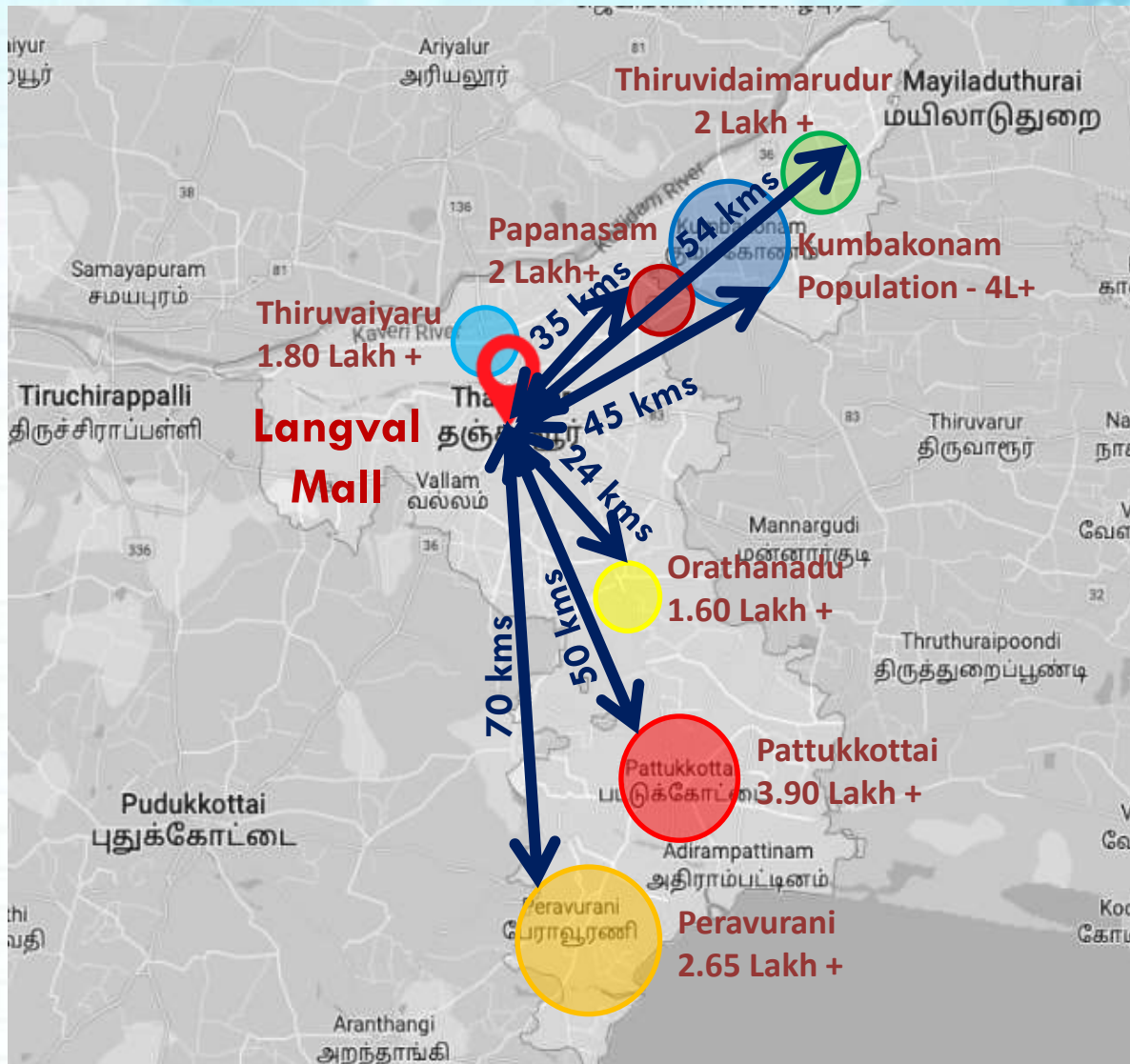
The literacy rate of Thanjavur is far better than the state literacy rate which stands at 80.33% and also betters the National literacy rate of 74%

The sex ratio of the city at 1042 & is much better than National average of 940

- Thanjavur is a **UNESCO World Heritage** site has as many as **74 temples**.
- It is a rice mill industry, there are more than **700 rice mills** in and around the Town.
- **Handloom industry** provides livelihood to more than 72,000 people in the district.
- Thanjavur is a noted centre for **cottage industries & handicrafts**, mats made of korai, screw pine, palm, and coconut leaves are the important cottage industries.
- Thanjavur is also known for the **manufacture of musical instruments and silk cloth** of a superior kind.
- In Thanjavur, the Maratha Kings developed a distinct style of painting and established a separate school known as the “Thanjavur School of Paintings.”
- The **Current TD** of Organised Retailers in the city is appx. Rs. 1300/- & others at appx. Rs. 2100/-



MALL INFORMATION



- Kumbakonam – 45 Kms
Population – 4,35,962
 - Papanasam – 35 Kms
Population – 2,72,871
 - Pattukkottai – 50 Kms
Population – 3,96,236
 - Peravurani – 70 Kms
Population – 2,69,000
 - Orathanadu – 24 Kms
Population – 1,60,367
 - Thiruvudaimarudur – 54 Kms
Population - 2,30,843
 - Thiruvaiyuru – 15 Kms
Population – 1,85,737
- Catchment of 25 Lakh population in the radius of about 50 Kms**



**CDR Mall
(Madurai)**



**Value Mall
(Erode)**



**Grand Galleria
(Purnia)**



**Crossroads Mall
(Siliguri)**



**City Centre
(Asansol)**

**For further details please contact:
*Beyond Squarefeet Advisory Pvt. Ltd.***

**Leaseline : +91.90041.41256
leasing@beyondsquarefeet.com**



LANGVAL MALL
NAMMA OORU NAMMA MALL



THANK YOU!