

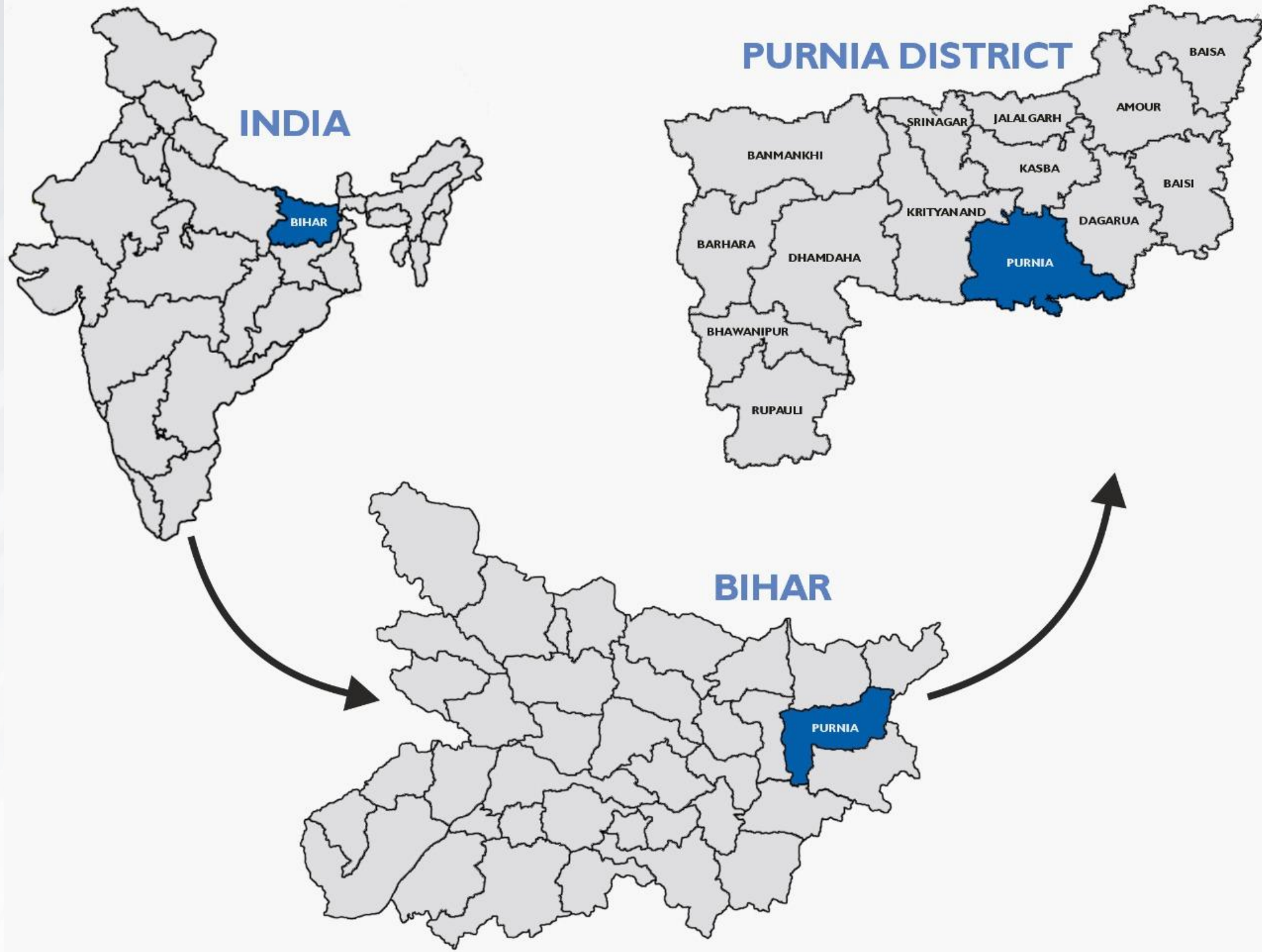
Presenting Purnea's 1ST AND ONLY MALL

Scheduled
Launch
Dec 2025



KP Extension, Kaptan Para, Purnea, Bihar - 854305

Where is Purnea?



About Purnea..

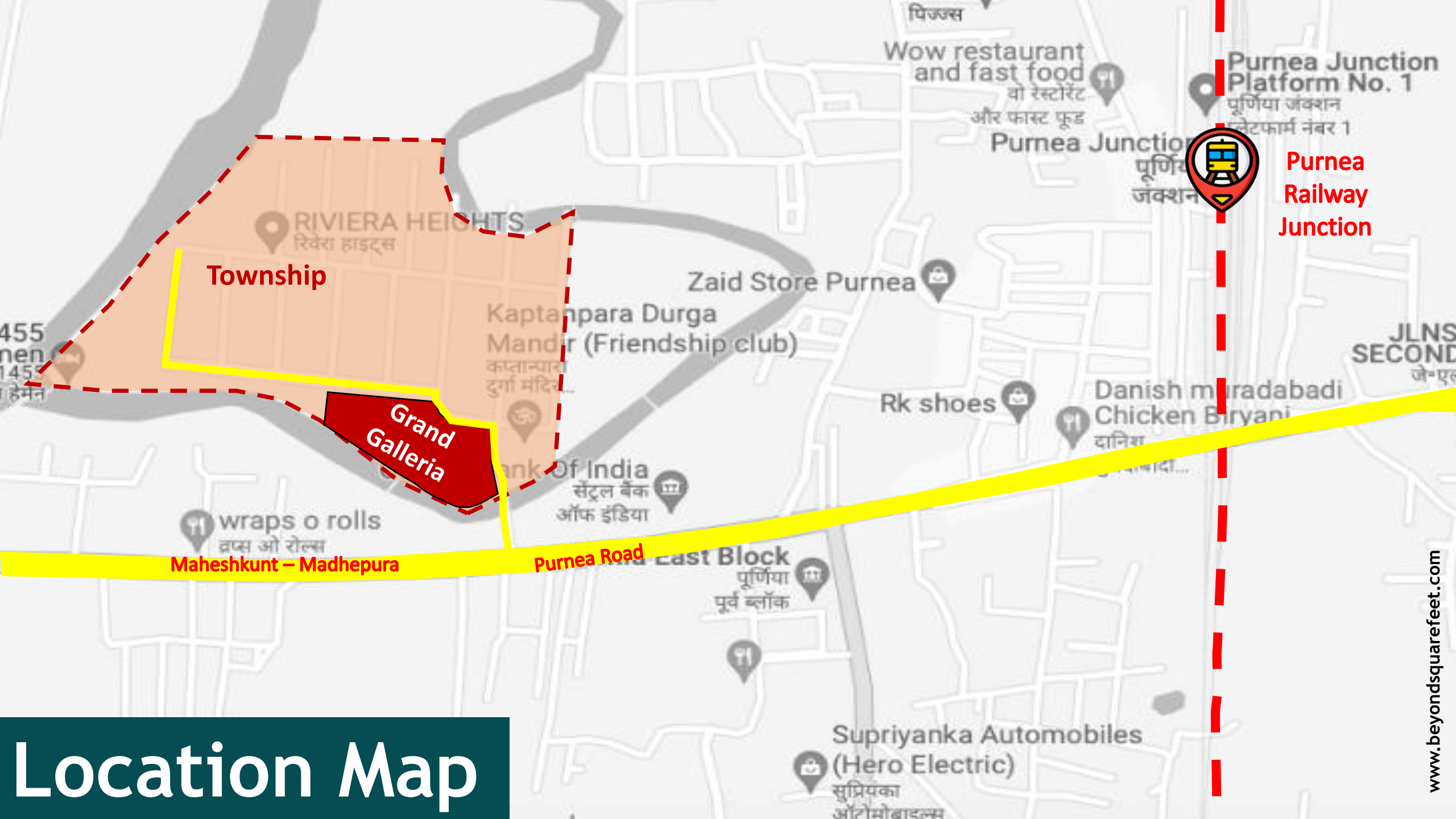
- Purnea is the **largest producer of Makhana** in Asia.
- It is also the **largest producer of Jute, Maize, Banana and Livestock** in Bihar.
- Anaaj Mandi in Purnea is **Aisa's largest Maize trading centre**.
- Purnea has **state's first Ethanol Plant & India's first grain based Ethanol Plant**.
- **India's First and only Jute Park** called the Punrasar Jute Park Ltd is also located in Purnea.
- The name Purnea is originated from the **Goddess Purn Devi** which has been in existence from 4th Century.
- Purnea is also nicknamed as **Mini Darjeeling** and **Jute City**.





Proposed Façade

www.beyondsquarefeet.com



Location Map



Primary Catchment

Radius
5km

www.beyondsquarefeet.com



**2,50,000 Sq. Ft.
BUA**



**3 Screen
Multiplex
(550+ Seats)**



**40+ Vanilla
Stores**



**Lavish Food Court
(350+ seats)**



**5 Anchors &
Mini Anchors**



150+ Car Parking



Mall Snapshot

The Plan

MALL ENTRY

WAY TO PARKING

MALL EXIT

SERVICE ENTRY / EXIT

TRUCK BUS STATION

STAGE AMPHITHEATER

OUT DOOR GAMING

GF-01 1,128 sq.ft

GF-02 1,085 sq.ft

GF-03 1,085 sq.ft

GF-04 1,085 sq.ft

GF-05 2,915 sq.ft

GF-06 1,380 sq.ft

GF-07 1,335 sq.ft

GF-08 11,790 sq.ft

GF-09 1,115 sq.ft

GF-10 515 sq.ft

GF-11 723 sq.ft

GF-12 1,025 sq.ft

GF-13 1,052 sq.ft

GF-14 1,062 sq.ft

GF-15 1,088 sq.ft

GF-16 17,950 sq.ft

GF-17 560 sq.ft

GF-18 1,105 sq.ft

GE-1

GE-2

GE-3

GE-4

GE-5

GE-6

GE-7

GE-8

GE-9

GE-10

GE-11

GE-12

GE-13

GE-14

GE-15

GE-16

GE-17

GE-18

GE-19

GE-20

GE-21

GE-22

GE-23

GE-24

GE-25

GE-26

GE-27

GE-28

GE-29

GE-30

GE-31

GE-32

GE-33

GE-34

GE-35

GE-36

GE-37

GE-38

GE-39

GE-40

GE-41

GE-42

GE-43

GE-44

GE-45

GE-46

GE-47

GE-48

GE-49

GE-50

GE-51

GE-52

GE-53

GE-54

GE-55

GE-56

GE-57

GE-58

GE-59

GE-60

GE-61

GE-62

GE-63

GE-64

GE-65

GE-66

GE-67

GE-68

GE-69

GE-70

GE-71

GE-72

GE-73

GE-74

GE-75

GE-76

GE-77

GE-78

GE-79

GE-80

GE-81

GE-82

GE-83

GE-84

GE-85

GE-86

GE-87

GE-88

GE-89

GE-90

GE-91

GE-92

GE-93

GE-94

GE-95

GE-96

GE-97

GE-98

GE-99

GE-100

GE-101

GE-102

GE-103

GE-104

GE-105

GE-106

GE-107

GE-108

GE-109

GE-110

GE-111

GE-112

GE-113

GE-114

GE-115

GE-116

GE-117

GE-118

GE-119

GE-120

GE-121

GE-122

GE-123

GE-124

GE-125

GE-126

GE-127

GE-128

GE-129

GE-130

GE-131

GE-132

GE-133

GE-134

GE-135

GE-136

GE-137

GE-138

GE-139

GE-140

GE-141

GE-142

GE-143

GE-144

GE-145

GE-146

GE-147

GE-148

GE-149

GE-150

GE-151

GE-152

GE-153

GE-154

GE-155

GE-156

GE-157

GE-158

GE-159

GE-160

GE-161

GE-162

GE-163

GE-164

GE-165

GE-166

GE-167

GE-168

GE-169

GE-170

GE-171

GE-172

GE-173

GE-174

GE-175

GE-176

GE-177

GE-178

GE-179

GE-180

GE-181

GE-182

GE-183

GE-184

GE-185

GE-186

GE-187

GE-188

GE-189

GE-190

GE-191

GE-192

GE-193

GE-194

GE-195

GE-196

GE-197

GE-198

GE-199

GE-200

GE-201

GE-202

GE-203

GE-204

GE-205

GE-206

GE-207

GE-208

GE-209

GE-210

GE-211

GE-212

GE-213

GE-214

GE-215

GE-216

GE-217

GE-218

GE-219

GE-220

GE-221

GE-222

GE-223

GE-224

GE-225

GE-226

GE-227

GE-228

GE-229

GE-230

GE-231

GE-232

GE-233

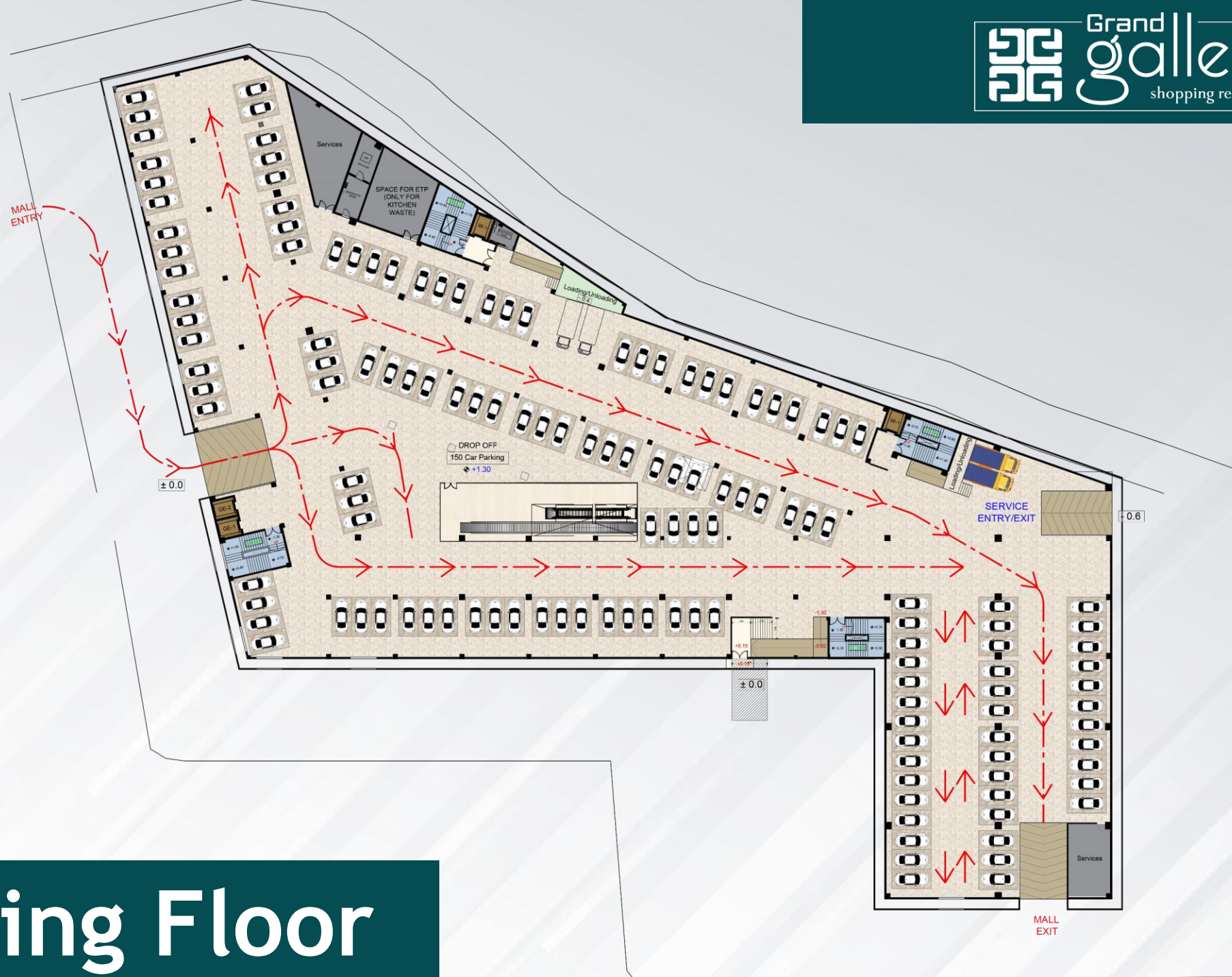
GE-234

GE-235

GE-236

GE-237

GE-238



Parking Floor

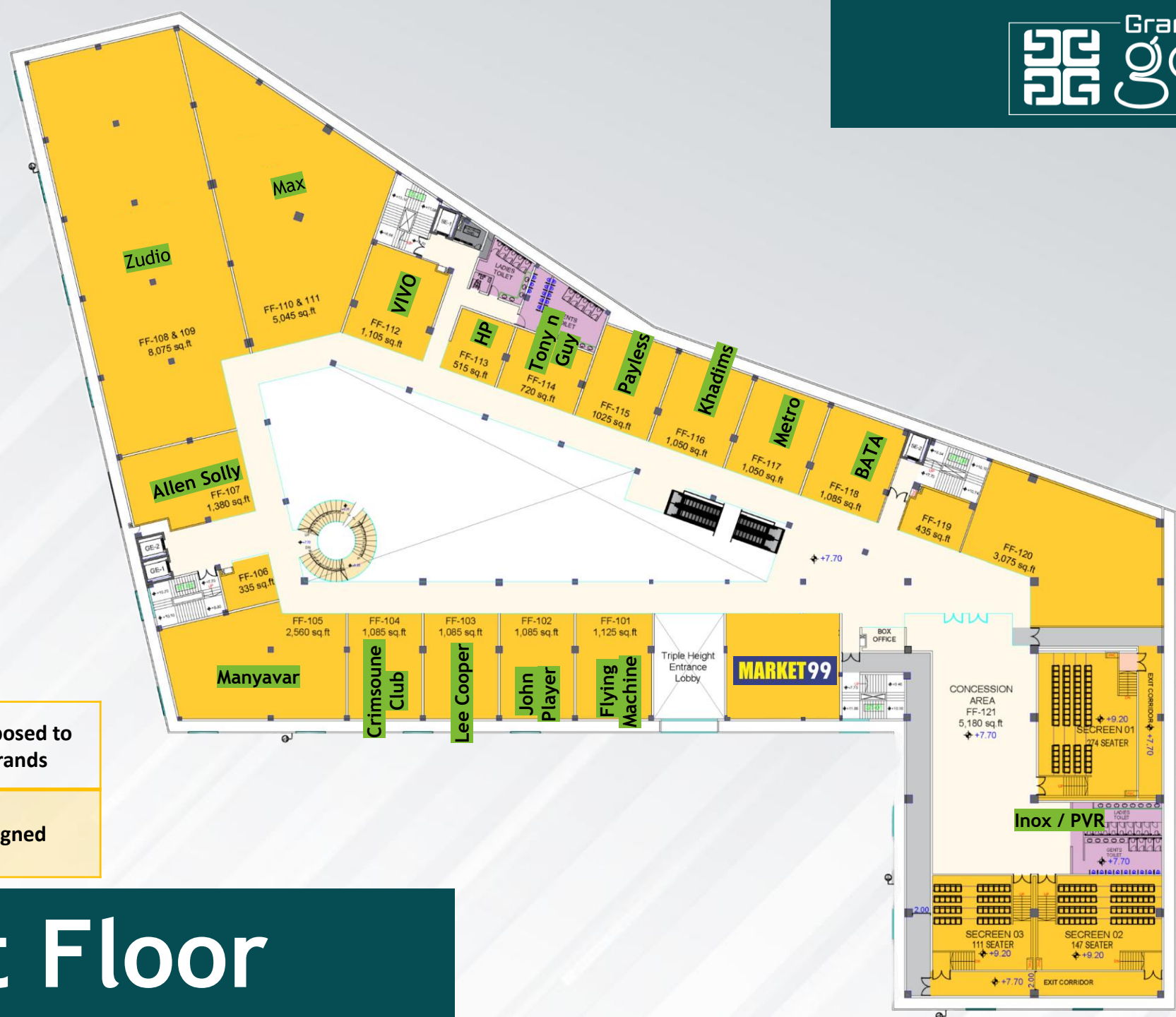
Brand Names	Proposed to brands
Brand Logos	Signed

Ground Floor



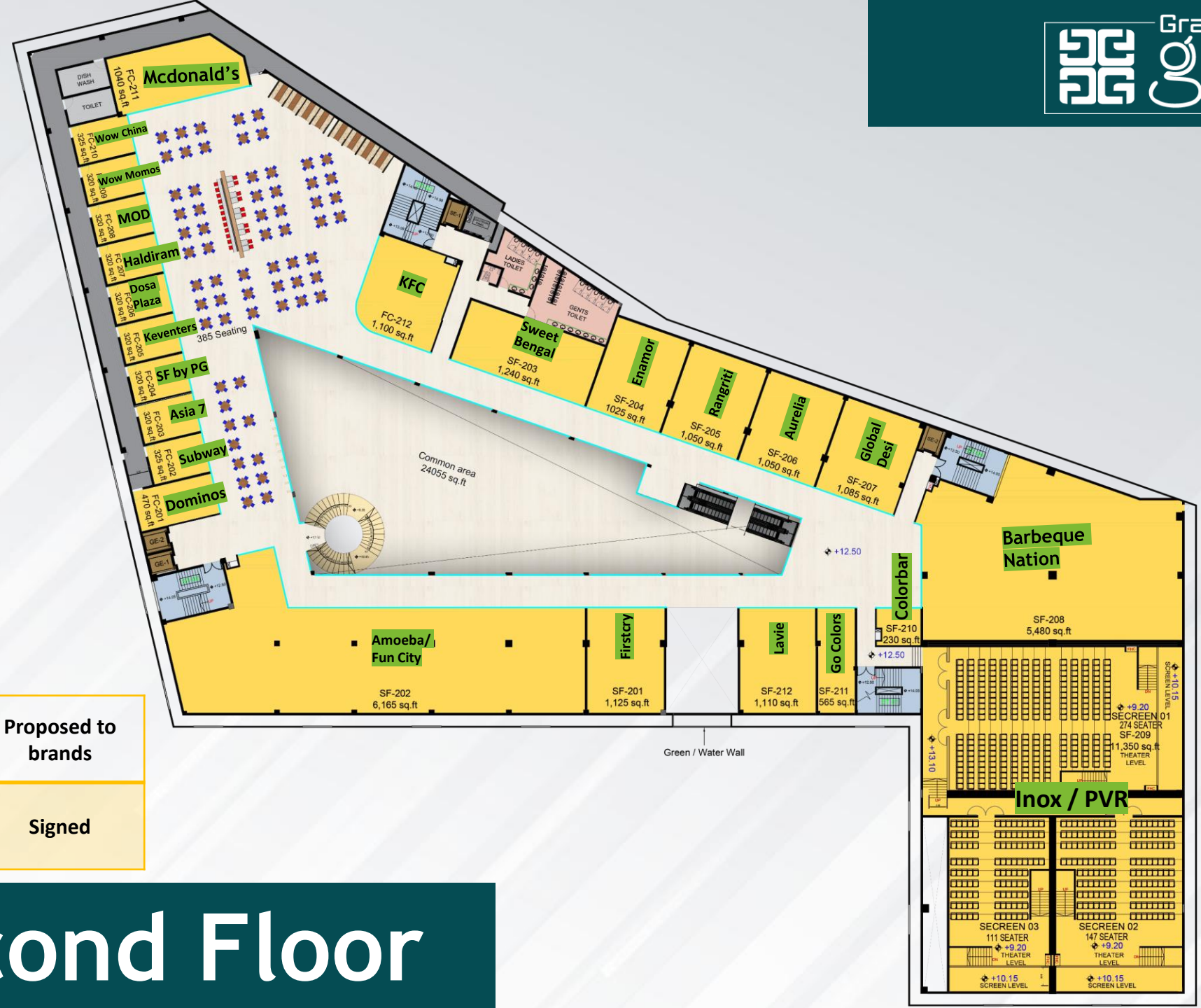
Brand Names	Proposed to brands
Brand Logos	Signed

First Floor



Brand Names	Proposed to brands
Brand Logos	Signed

Second Floor



Detail for Retail

- First and Only Mall of the Region.
- 100% Lease Model Mall.
- Low CAM for better occupancy cost to retailers
- Prime Location - Close to the Railway Station.
- Very Encouraging Trading Density Numbers
- Educational hub for Northern Bihar
- Commercial Hub in the region
- Under Smart City Plan
- Developed by Reputed Developer of Purnea





Value Mall (Erode)



City Centre (Asansol)



Crossroads Mall (Siliguri)



CDR Mall (Madurai)



Langval Mall (Thanjavur)

Concurrently Leasing

EXCLUSIVELY DESIGNED, MARKETED & LEASED BY



Leaseline +91-90041-41256
leasing@beyondsquarefeet.com

www.beyondsquarefeet.com