

Leasing Presentation for Bawa'z City Square Faridkot



MEMBER OF
MIDDLE EAST
COUNCIL OF
SHOPPING CENTRES



Member of
International Council
of Shopping Centers



India | Iran | Nepal | Nigeria | Oman | Qatar



**BAWA'Z
CITY SQUARE**
Shopping Made Easy

Presenting the First Shopping Hub of Faridkot

**beyond
squarefeet**
shopping mall specialist™

The most happening place to be in the entire region..!!!



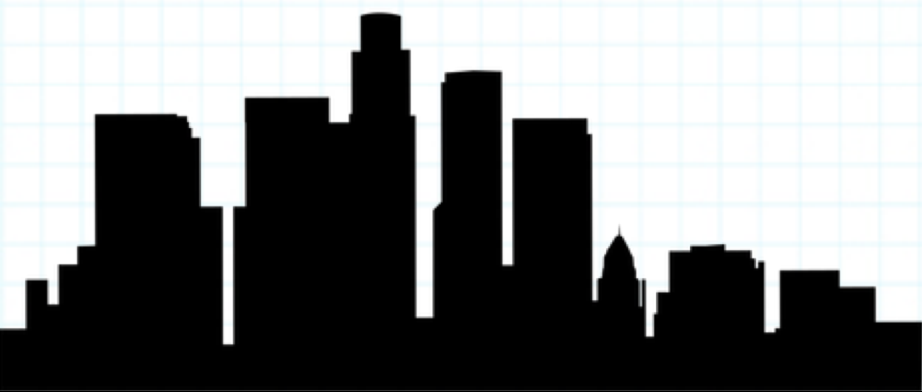


**BAWA'IZ
CITY SQUARE**
Shopping Made Easy

Birds Eye Perspective

beyond
squarefeet
shopping mall specialist

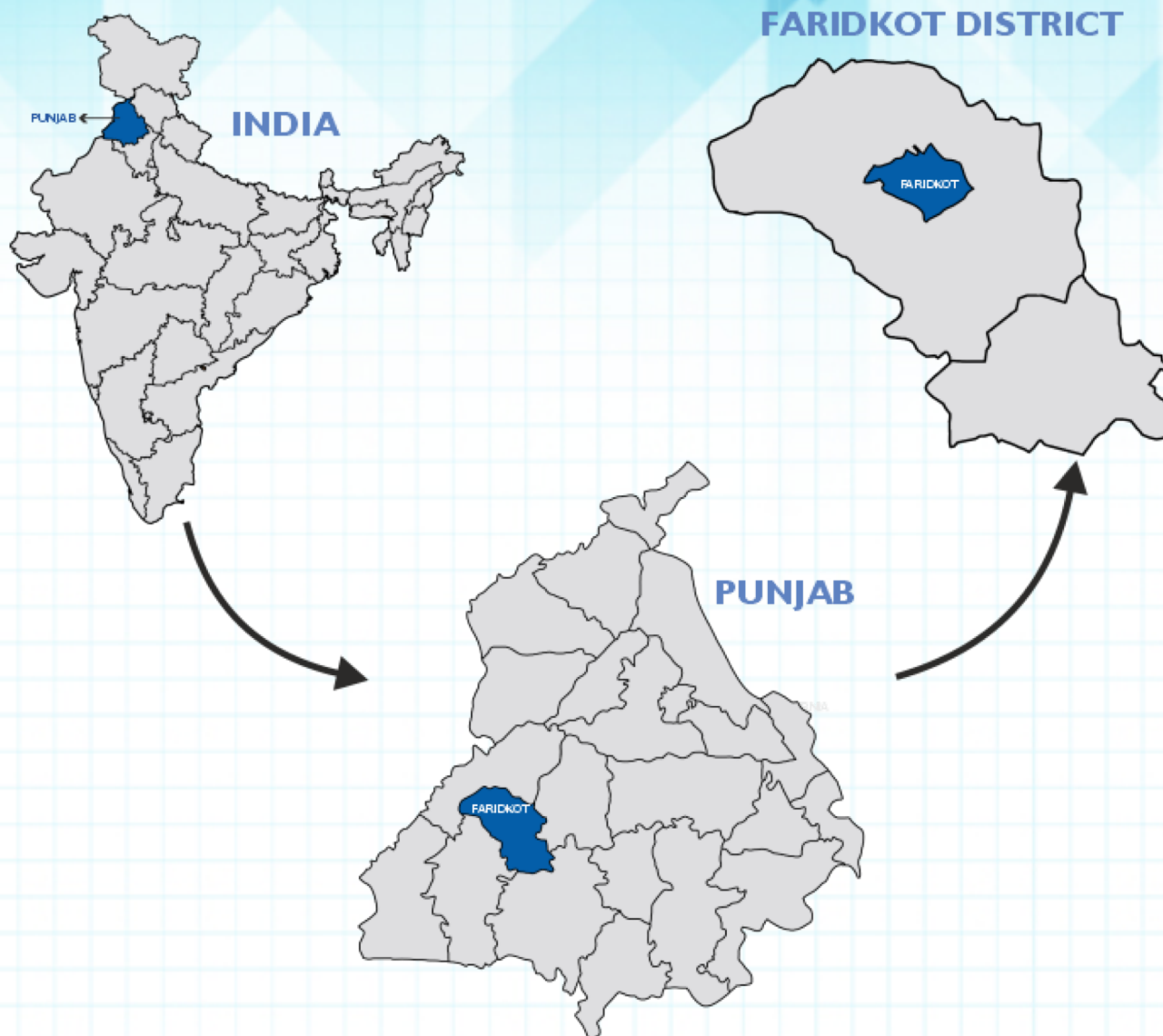


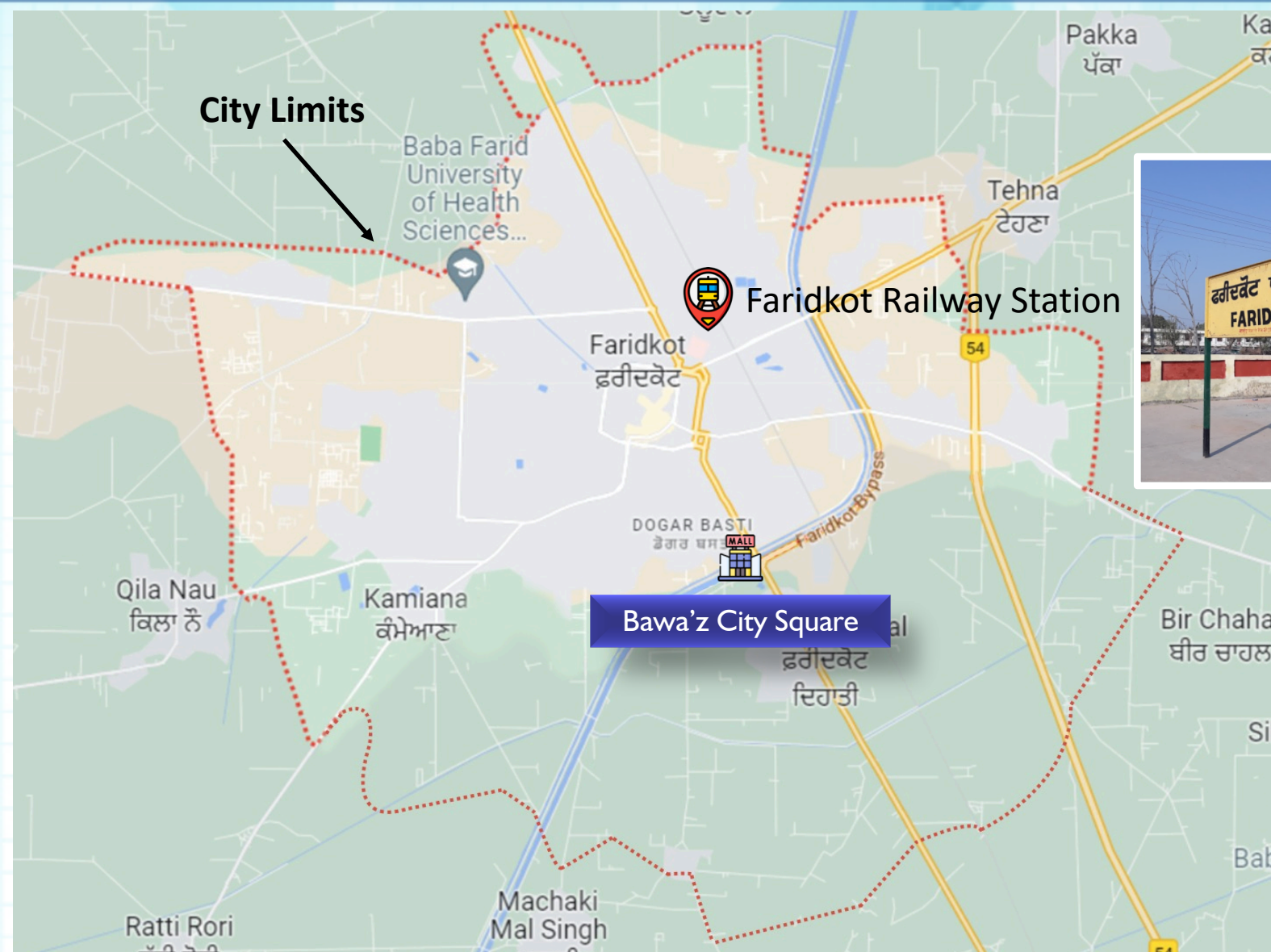


CITY SCAPE

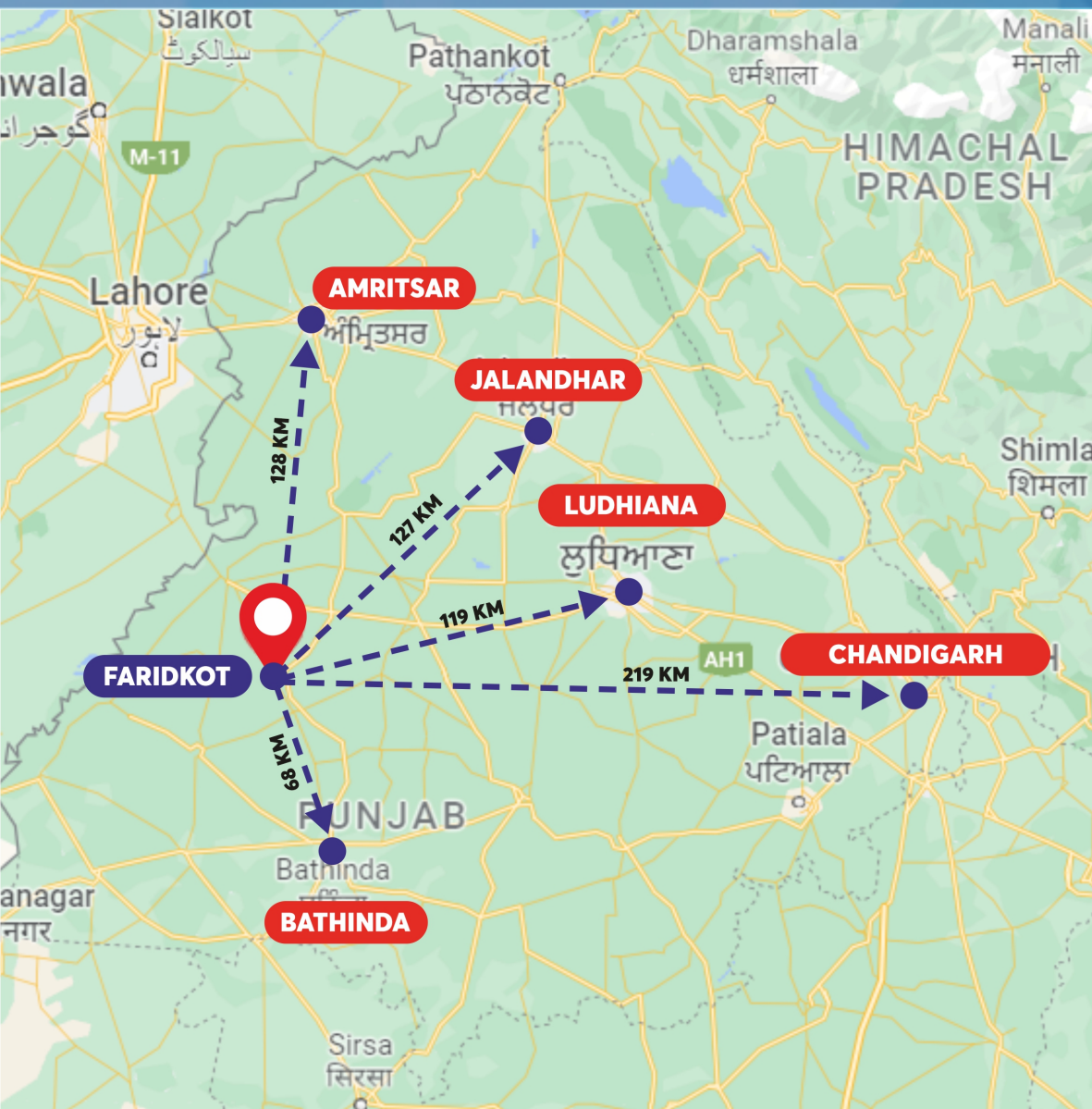


Geographical Location





Distance from Few Major Cities



Sr. No.	City	Distance (kms)	Distance in Time (Hrs)
1	Bathinda	68	1 hr
2	Ludhiana	119	2 hrs 15 mins
3	Jalandhar	127	2 hrs 25 mins
4	Amritsar	128	2 hrs 26 mins
5	Chandigarh	219	4 hrs 32 mins

- Faridkot serves as the **headquarters** for both, the **Faridkot district** as well as the **Faridkot Division**
- The town of Faridkot was founded during the 13th century as Mokahar by Raja Mokalsi. The Raja renamed Mokahar, after Baba Farid paid a visit to the town. The city was renamed in the honor of Baba Farid, a revered 13th century Sufi saint
- Faridkot has two canals passing through the city, which help the agriculture growth of the city.
- Faridkot is situated in a **cotton-producing area**, and its industries include **cotton ginning and baling, power-loom weaving, steel rolling, and metal founding. Agricultural implements, machine tools, bicycles, and sewing machines are manufactured**
- There are **96 private English language schools** in the city



Few Educational Institutions in the City

Guru Gobind Medical College



Dasmesh Institute of Research and Dental Sciences



Baba Farid University of Health Sciences



Baba Banda Bahadur College of Nursing



Demographics Of Primary Catchment

Particulars	Faridkot District	Faridkot & Kotkapura
Area	1458.00	35.39
Temperature	Maximum 47° Minimum 0.7°	
Avg. Rainfall	433mm	
Population (Approx.)	6,92,000	2,45,000
Density (person/sq km)	450	6922
Literacy	69.55	70.38



BAWA'S CITY SQUARE
Shopping Made Easy

Key Brands in the City

beyond squarefeet
shopping mall specialist™





BAWA'Z
CITY SQUARE
Shopping Made Easy

Key Brands in the City

beyond
squarefeet
shopping mall specialist™





**BAWA'S
CITY SQUARE**
Shopping Made Easy

Key Brands in the City





MALL INFORMATION

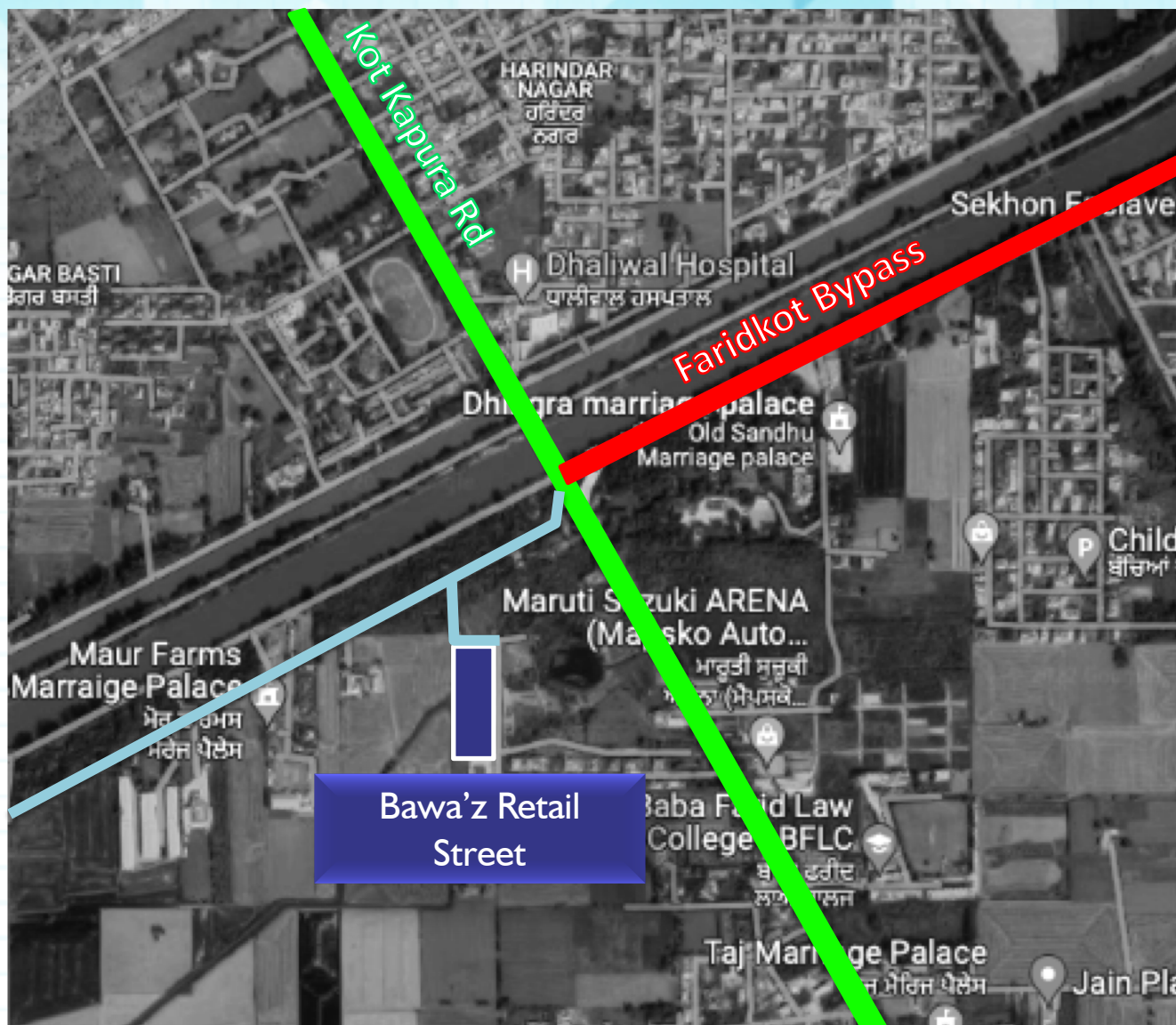
- Area: **75,000 Sq.ft.**
- Multiplex: **3 Screen (575 seats)**
- Anchor: **1 Mini Anchors**
- Vanilla Shops: **25+ National / International brands**
- Food-Court: **150+ seats**
- Parking: **250+ Car Parks**



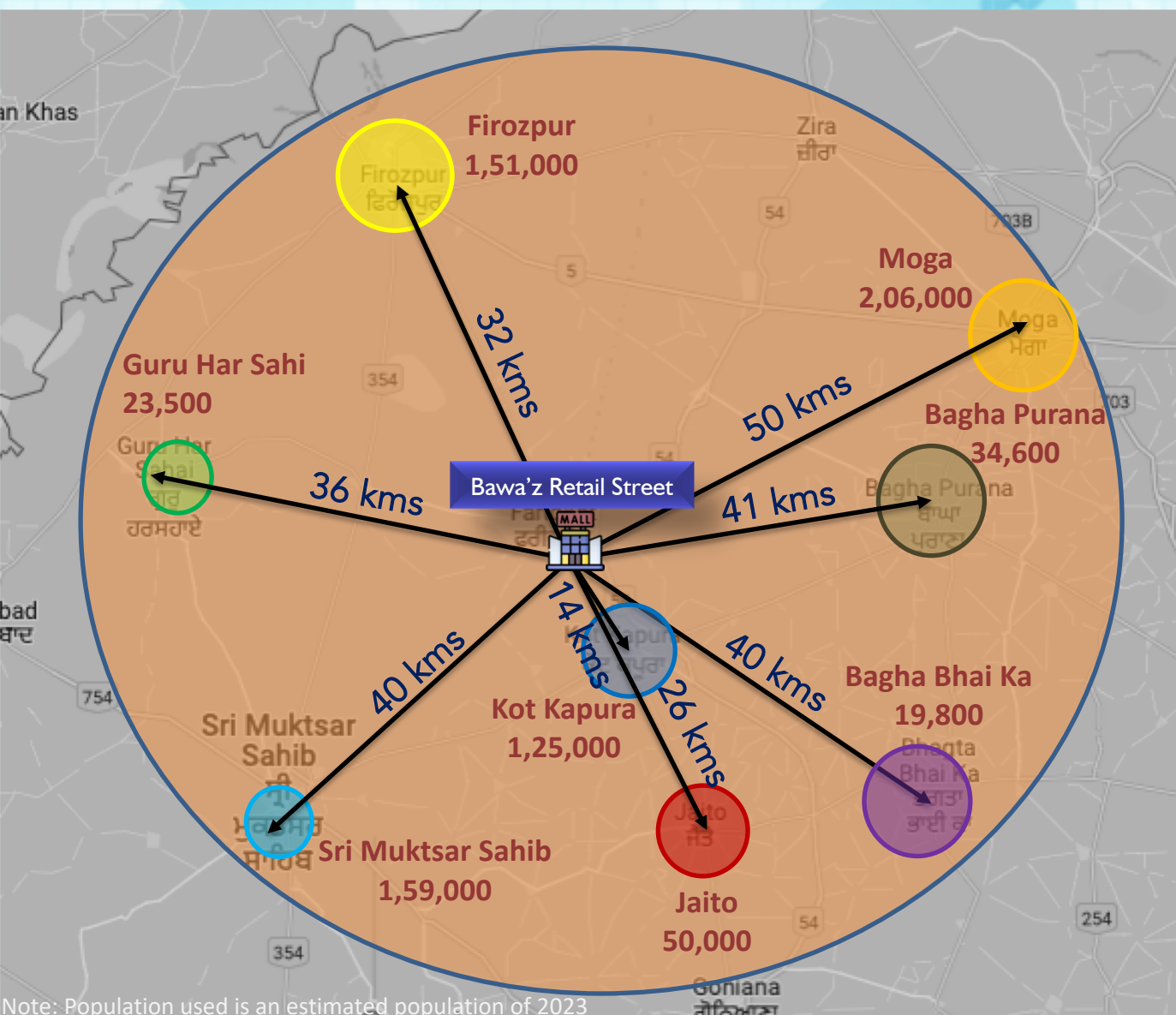
- **100% Lease Model.**
- **A Convenient Shopping Hub for Faridkot & Kotkupara.**
- **Strategically located** – on junction of Faridkot Bypass and Faridkot - Kotkapura road.
- It offers **first mover advantage** to organised retailers.
- Ample space for **Outdoor Entertainment.**
- **Encouraging Trading Density** Numbers.
- Rapidly developing as an **Educational Hub.**
- Developed by **Reputed Developer** of Faridkot (Bawaz Brands).



LOCATION OF MALL

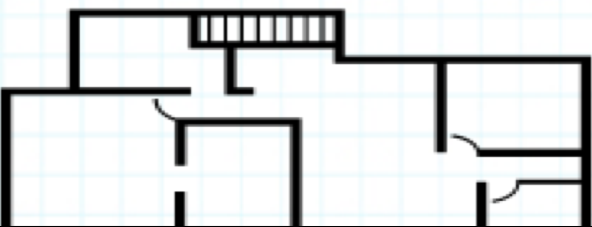


Demographics Of Secondary Catchment



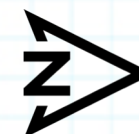
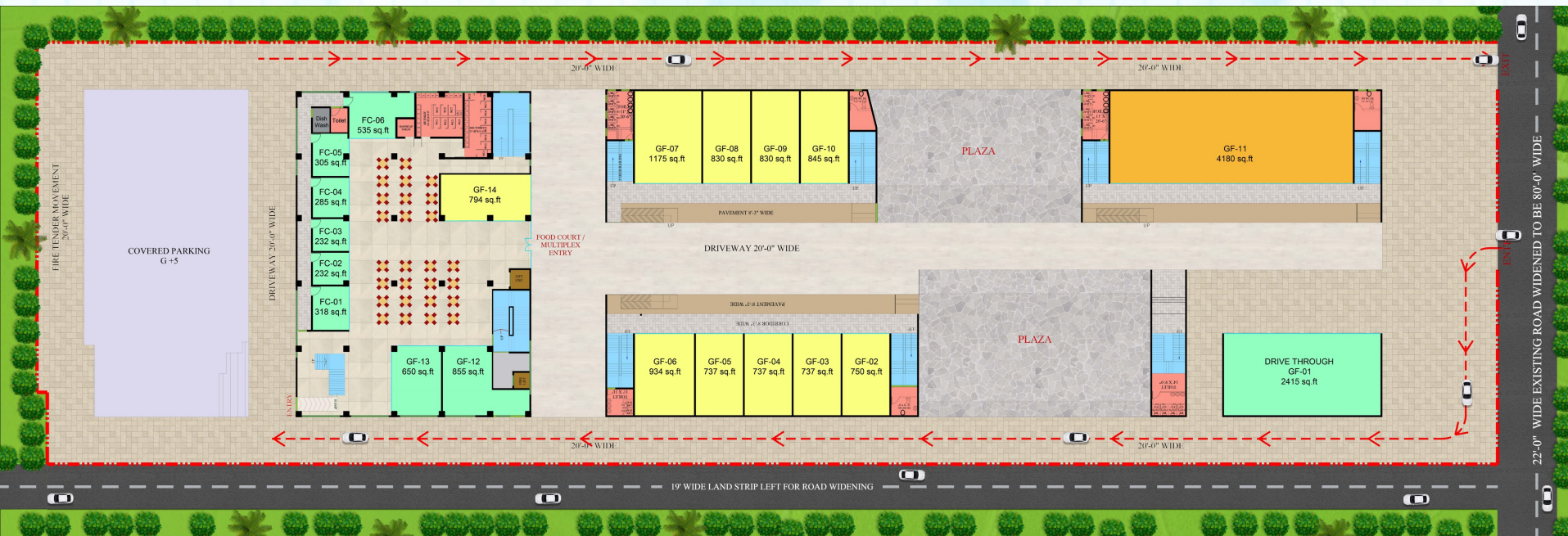
- Kot Kapura: 14 Kms
Pop: 1,25,000
 - Jaito: 26Kms
Pop: 50,000
 - Firozpur: 32 Kms
Pop: 1,51,000
 - Guru Har sahi: 36 Kms
Pop: 23,500
 - Sri Muktsar Sahib: 40 Kms
Pop: 1,59,000
 - Bagha Purana: 41 Kms
Pop: 34,600
 - Bhagta Bhai ka : 40
19,800
 - Moga: 50 Kms
Pop: 2,06,000
- Total Catchment
Population of appx.
10,00,000 in 50 Kms
Radius**

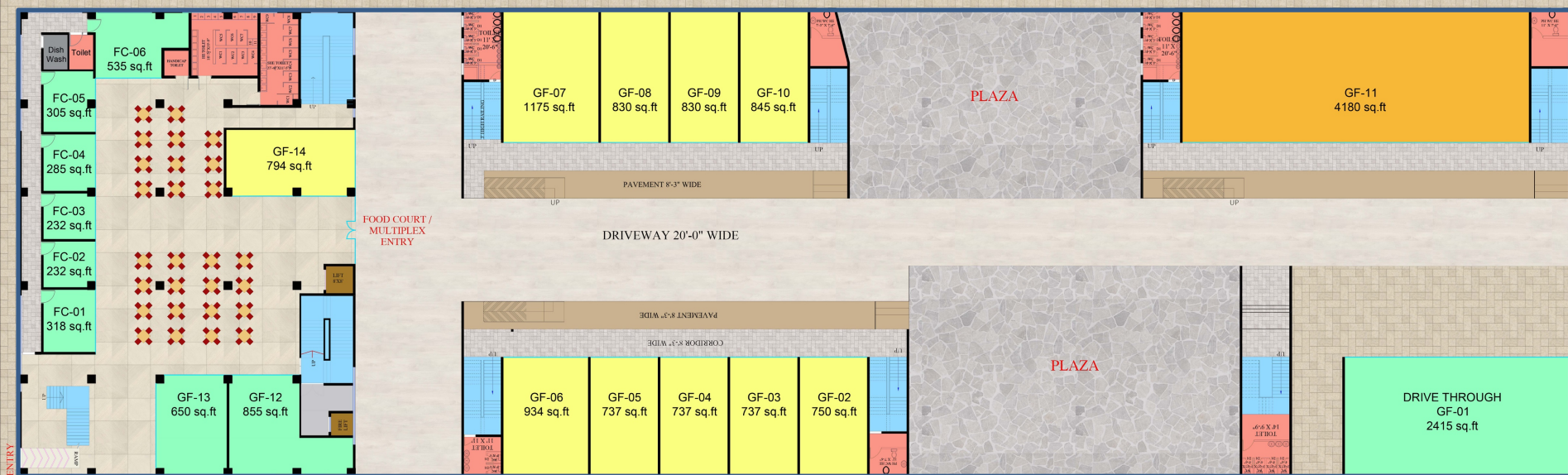
Note: Population used is an estimated population of 2023



FLOOR PLANS

BAWA'Z CITY SQUARE Site Plan

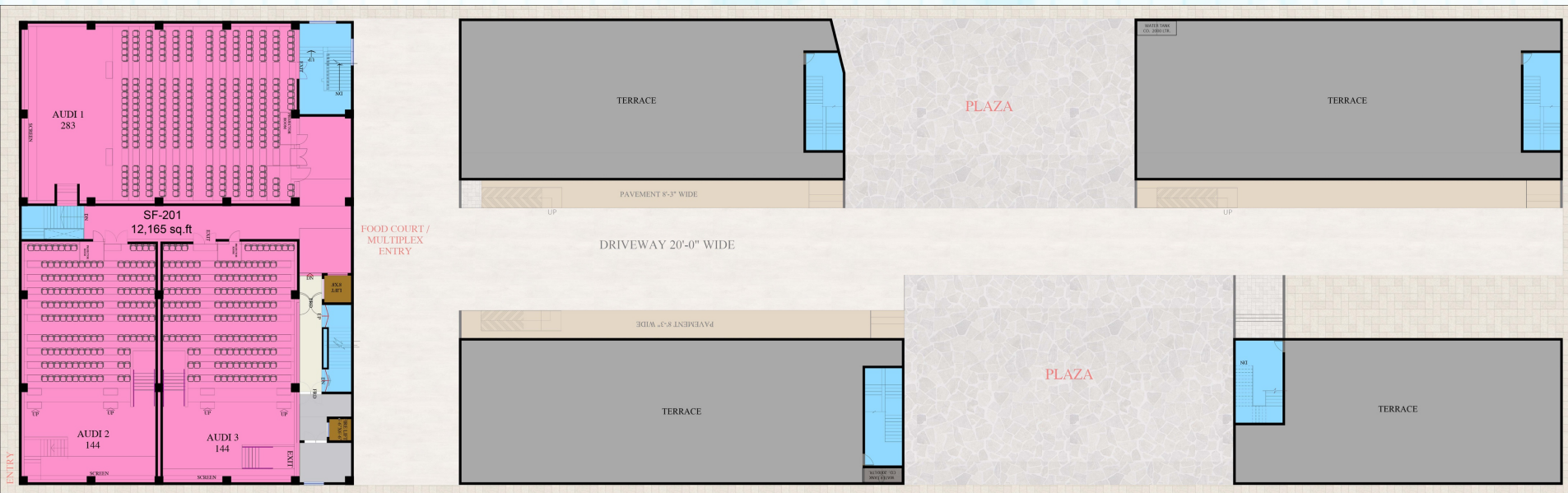








Second Floor Plan





**For further details please contact:
*Beyond Squarefeet Advisory Pvt. Ltd.***

**Leaseline : +91.98201.88182
leasing@beyondsquarefeet.com**

THANK YOU!